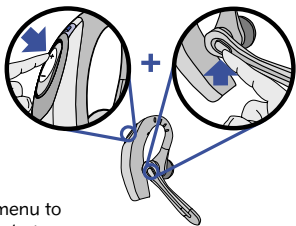


# VOYAGER 510 Bluetooth Headset

## Pairing headset and mobile phone

Before using your headset with your Bluetooth mobile phone or device, you must pair it with that device.

- A. Turn on mobile phone. Place headset in pairing mode by simultaneously pressing and holding listen volume adjust button marked + (volume up) and call control button for 2 seconds. Release the buttons when status indicator light flashes alternately red and blue.



- B. Use your mobile phone's menu to search for Bluetooth audio devices and select "PLT 510" when it appears on the display.

*Note: In some circumstances the pairing process can take up to two minutes to complete.*



- C. When the phone display asks for a passkey, enter: **0000**. Status indicator flashes blue, once the headset is successfully paired. If pairing fails, try again starting with Step A.

