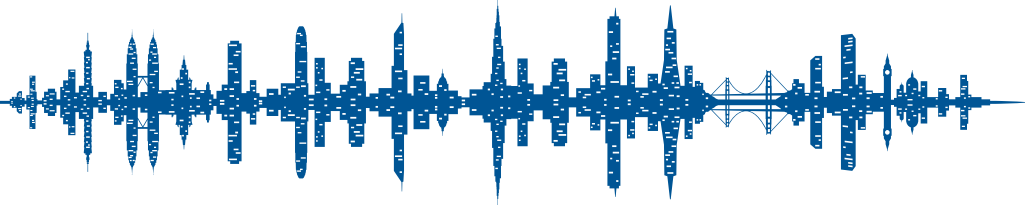




 **BUY NOW**

**plantronics**

# Electronic Hook Switch Guide



SAVI® 700 SERIES | CS500™/CS500 XD SERIES | MDA200™ | VOYAGER LEGEND® CS

# Electronic Hook Switch Guide Contents



Electronic Hook Switch Cables (EHS) provide remote desk phone call control (answer/end) with your Plantronics wireless headset system (or the MDA200™ headset hub). We offer cables that are compatible with many of the most popular office desk phones.

We also have a handset lifter accessory that can be used with most desk phones that are not compatible with one of our EHS cables.

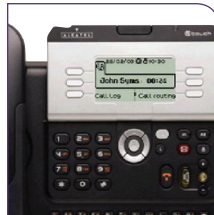
Visit [Plantronics.com](http://Plantronics.com) for more information.



1  
Aastra Phone Models



Polycom Phone Models



2  
Alcatel-Lucent Phone Models



9  
ShoreTel Phone Models



3 - 4  
Avaya Phone Models  
(now including Tenovis  
Phone Models)



10  
Siemens Enterprise  
Communications – now Unify  
Phone Models



5 - 6  
Cisco Phone Models



11  
Toshiba Phone Models



7  
NEC Phone Models



# Electronic Hook Switch for Aastra®



**Aastra**



**Desk Phone Models**

5370	6739i	6757i CT	6775
5380	6753i	6771	6775 IP
5370 IP	6755i	6773	
5380 IP	6757i	6773 IP	


**EHS Cable**

APS-11\*  
PN: 37818-11




\* APS-11 replaces APS-10


**Plantronics Au**




**Savi® 700 Series**  
Wireless headset system manages PC, mobile and desk phone calls



**CS500™/CS500 XD™ Series**  
Wireless headsets manage desk phone calls



**MDA200™**  
Enables USB connectivity to the desk phone to manage both PC and desk phone calls

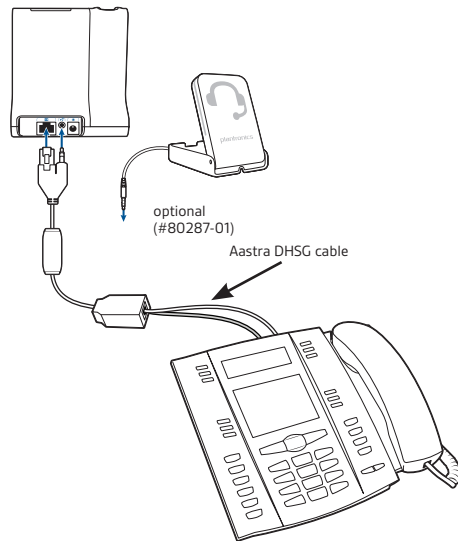


**Voyager Legend® CS**  
Wireless Bluetooth headset system manages desk phone and mobile calls

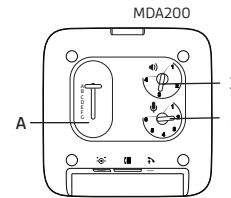
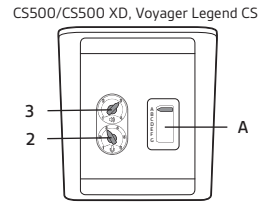
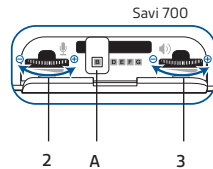
**EHS Setup** Use the EHS setup below to automatically answer a desk phone call by pressing a button on your Savi 700 Series, CS500/CS500 XD Series or Voyager Legend CS headset or MDA200.


**Aastra models:** 5370, 5380, 5370 IP, 5380 IP, 6739i, 6753i, 6755i, 6757i, 6757i CT, 6771, 6773 IP, 6775, 6775 IP

**Setup**



**Configuration**




 Only the Aastra DHSG cable should be connected directly to your phone. No 3rd party DHSG cables should be connected directly to the Aastra IP phone.

# Electronic Hook Switch for Alcatel-Lucent



**Alcatel-Lucent**



**Desk Phone Models**  
 Touch 4029    My IC 8082  
 Touch 4039    OmniTouch 8082 MyIC  
 IP Touch 4028  
 IP Touch 4038  
 IP Touch 4068

**EHS Cable**



**APA-23\***  
 PN: 38908-11

\* APA-23 replaces APA-20 and APA-22

**Plantronics Audio Solutions**



**Savi 700 Series**  
 Wireless headset system manages PC, mobile and desk phone calls



**CS500/CS500 XD Series**  
 Wireless headsets manage desk phone calls



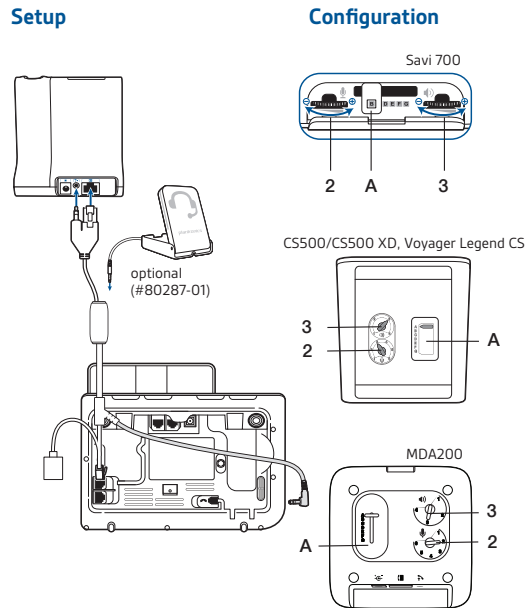
**MDA200**  
 Enables USB connectivity to the desk phone to manage both PC and desk phone calls



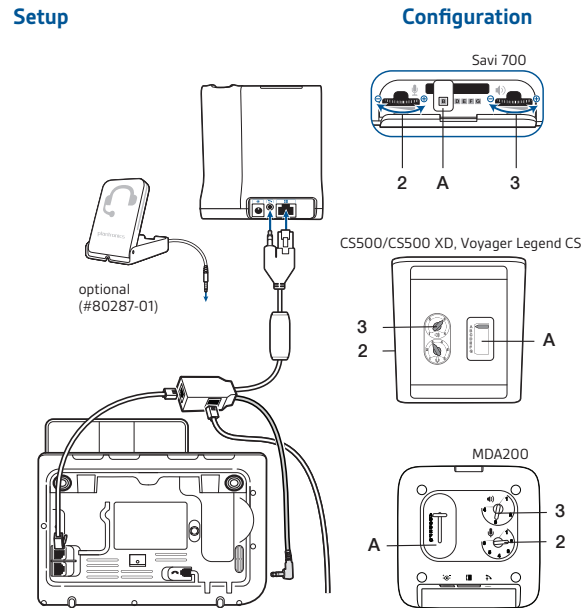
**Voyager Legend CS**  
 Wireless Bluetooth headset system manages desk phone and mobile calls

## EHS Setup Use the EHS setup below to automatically answer a desk phone call by pressing a button on your Savi 700 Series, CS500/CS500 XD Series or Voyager Legend CS headset or MDA200.

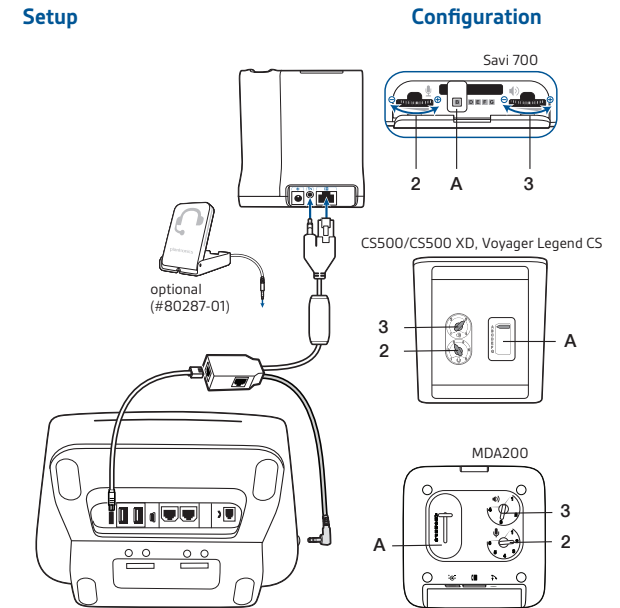
### Alcatel-Lucent models: IP Touch (4028, 4038, 4068)



### Alcatel-Lucent models: Touch (4029, 4039)



### Alcatel-Lucent models: My IC 8082, OmniTouch 8082 MyIC





# Electronic Hook Switch for Avaya®



**Avaya**

**APV-63 Cable**


1408	9608	9670
1416	9611	9620L
1608	9620	2410
1616	9621	4630
9404	9630	6416D+M
9406	9640	6424D+M
9504	9641G	
9508	9650	

**APV-71 Cable**

1120E		
1140E		
1150E		
1165E		

**APV-66 Cable**

2420	4621SW	5420
4610	4622SW	5610
4610SW	4625SW	5620
4620	4630SW	5621
4620SW		




**EHS Cable**

**APV-63\***  
PN: 38734-11


**APV-66\***  
PN: 38633-11

**APU-71\***  
PN: 83018-11




\* APV-63 replaces APV-62; APV-66 replaces APV-65; APU-71 has replaced APU-70


**Plantronics Au**




**Savi 700 Series**  
Wireless headset system manages PC, mobile and desk phone calls



**CS500/CS500 XD Series**  
Wireless headsets manage desk phone calls



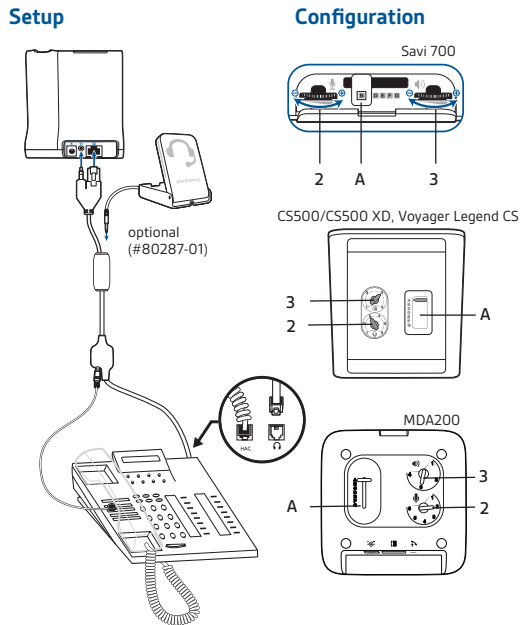
**MDA200**  
Enables USB connectivity to the desk phone to manage both PC and desk phone calls



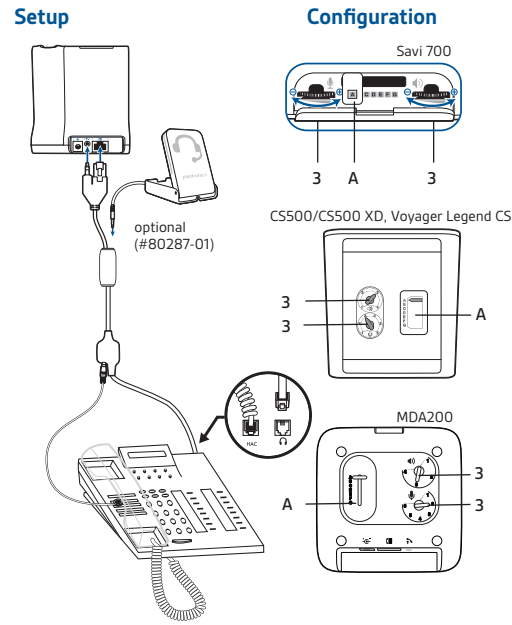
**Voyager Legend CS**  
Wireless Bluetooth headset system manages desk phone and mobile calls

## EHS Setup Use the EHS setup below to automatically answer a desk phone call by pressing a button on your Savi 700 Series, CS500/CS500 XD Series or Voyager Legend CS headset or MDA200.

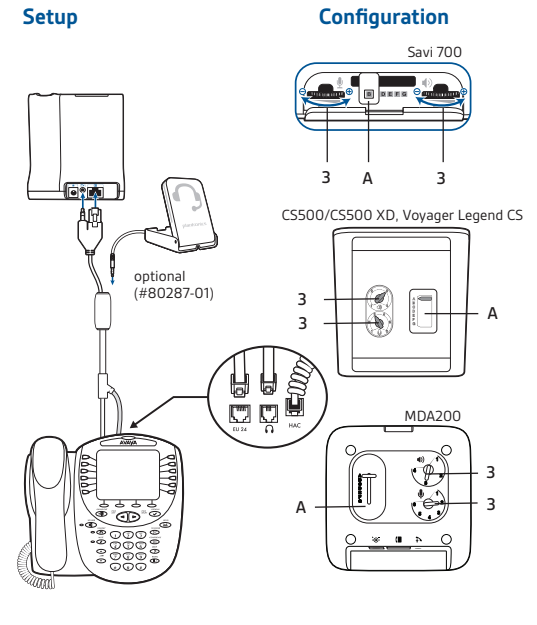
**Avaya models:** 1120E, 1140E, 1150E, 1165E, 1408, 1416, 1608, 1616, 9404, 9406, 9504, 9508, 9608, 9611, 9620, 9621, 9630, 9640, 9641G, 9650, 9670, 9620L



**Avaya models:** 2410, 4630, 6416D+M, 6424D+M



**Avaya models:** 2420, 4610, 4610SW, 4620, 4620SW, 4621SW, 4622SW, 4625SW, 4630SW, 5420, 5610, 5620, 5621



# Electronic Hook Switch for Avaya




**Tenoris**



**Desk Phone Models**

- T3 Classic with Interface Adapter
- T3 IP Classic
- T3 IP II Classic
- T3 IP Classic with Interface Adapter
- TH13
- TM13
- TS13
- T3 Compact
- T3 IP Comfort
- T3 IP II Comfort
- OS 13
- OS33





**EHS Cable**



**APT-31\***  
PN: 37820-11

*\* APT-31 replaces APT-30*

**Plantronics Au**

**Savi 700 Series**  
Wireless headset system manages PC, mobile and desk phone calls

**CS500/CS500 XD Series**  
Wireless headsets manage desk phone calls

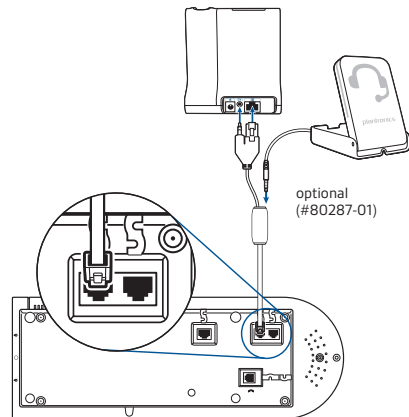
**MDA200**  
Enables USB connectivity to the desk phone to manage both PC and desk phone calls

**Voyager Legend CS**  
Wireless Bluetooth headset system manages desk phone and mobile calls

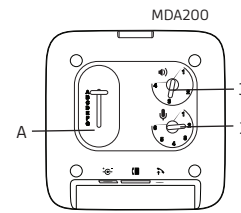
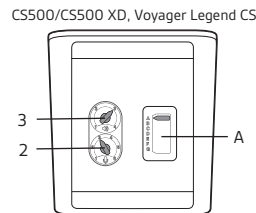
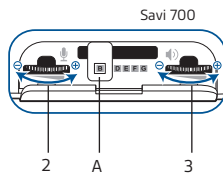
**EHS Setup** Use the EHS setup below to automatically answer a desk phone call by pressing a button on your Savi 700 Series, CS500/CS500 XD Series or Voyager Legend CS headset or MDA200.

**Tenoris models:** T3 Classic with Interface Adapter, T3 IP Classic, T3 IP II Classic T3 Classic with Interface Adapter, TH13, TM13, TS13, T3 Compact, T3 IP Comfort, T3 IP II Comfort, OS 13, OS33

## Setup



## Configuration



# Electronic Hook Switch for Cisco®



**Cisco**

**APC-41 Cable**  
7942G 7965G  
7945G 7975G  
7962G

**APC-42 Cable**  
7942G 7965G  
7945G 7975G  
7962G 6945

**APU-71 Cable**  
8961  
9951  
9971

**EHS Cable**

**APC-41\***  
PN: 38350-11

**APC-42**  
PN: 38350-12

**APU-71\***  
PN: 83018-11

*\* APC-41 replaces APC-40; APU-71 has replaced APU-70*

**Plantronics Au**

**Savi 700 Series**  
Wireless headset system manages PC, mobile and desk phone calls

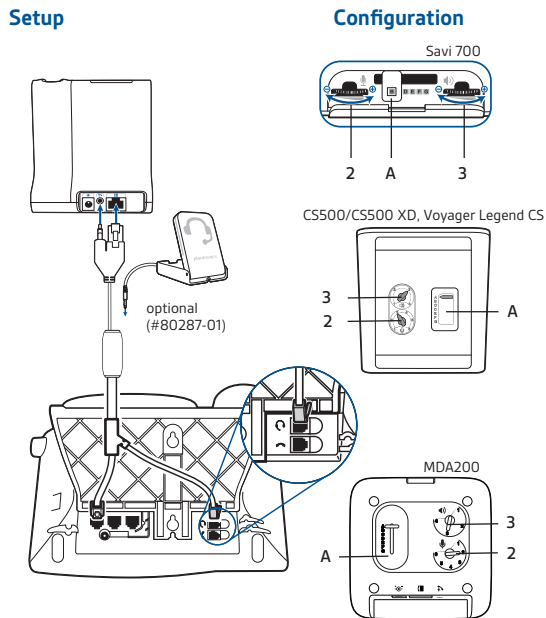
**CS500/CS500 XD Series**  
Wireless headsets manage desk phone calls

**MDA200**  
Enables USB connectivity to the desk phone to manage both PC and desk phone calls

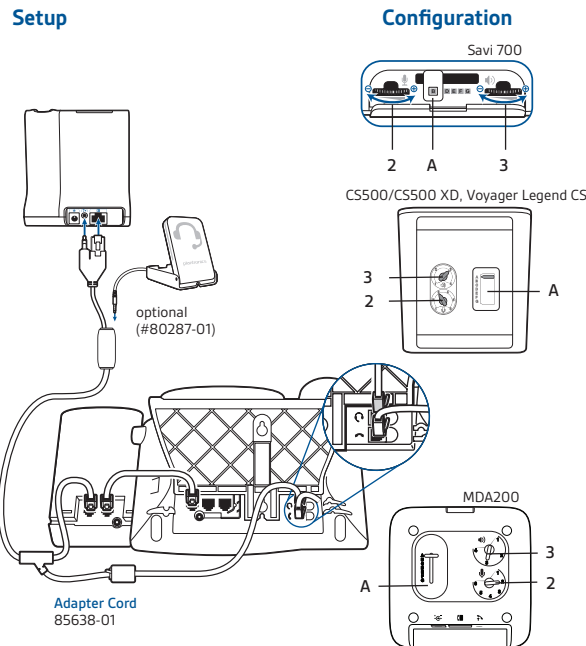
**Voyager Legend CS**  
Wireless Bluetooth headset system manages desk phone and mobile calls

## EHS Setup Use the EHS setup below to automatically answer a desk phone call by pressing a button on your Savi 700 Series, CS500/CS500 XD Series or Voyager Legend CS headset or MDA200.

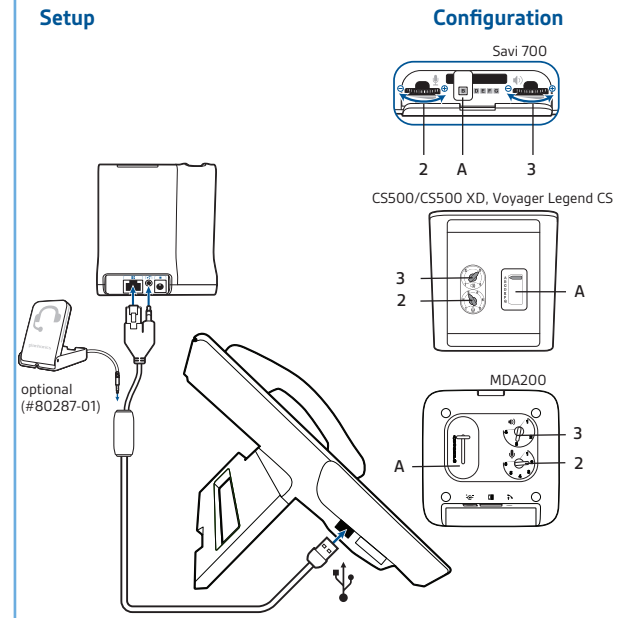
Cisco models: 7942G, 7945G, 7962G, 7965G, 7975G, 6945



Cisco models: 7942G, 7945G, 7962G, 7965G, 7975G, 6945  
Installation with sidcar



Cisco models: 8961, 9951, 9971





# Electronic Hook Switch for Cisco®



**Cisco**




**APC-45 Cable**  
SPA512  
SPA514  
SPA525G2


**APC-82 Cable**  
8941  
8945

**EHS Cable**


**APC-45**  
P/N: 87317-01



**APC-82**  
PN: 201081-01



**Plantronics Au**



**Savi 700 Series**  
Wireless headset system manages PC, mobile and desk phone calls

**CS500/CS500 XD Series**  
Wireless headsets manage desk phone calls

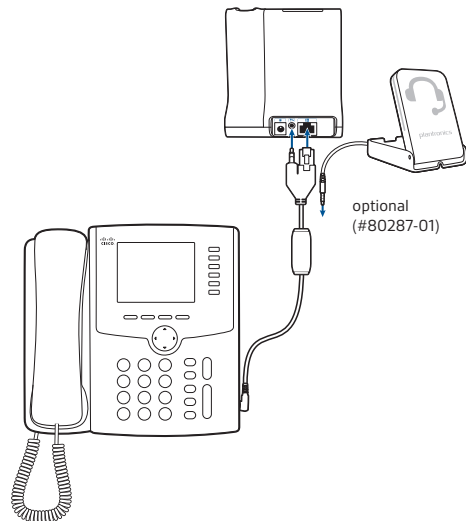
**MDA200**  
Enables USB connectivity to the desk phone to manage both PC and desk phone calls

**Voyager Legend CS**  
Wireless Bluetooth headset system manages desk phone and mobile calls

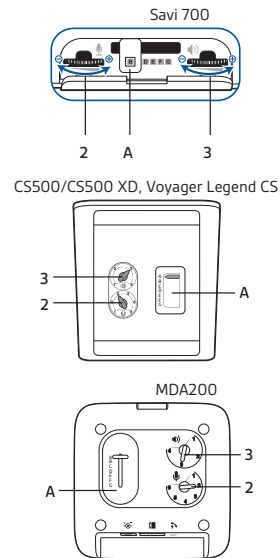
## EHS Setup Use the EHS setup below to automatically answer a desk phone call by pressing a button on your Savi 700 Series, CS500/CS500 XD Series or Voyager Legend CS headset or MDA200.

Cisco models: SPA512, SPA514, SPA525G2

### Setup

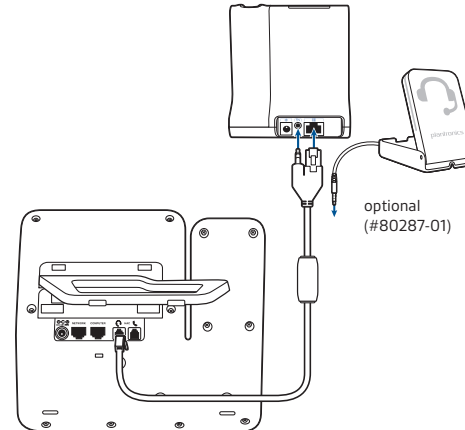


### Configuration

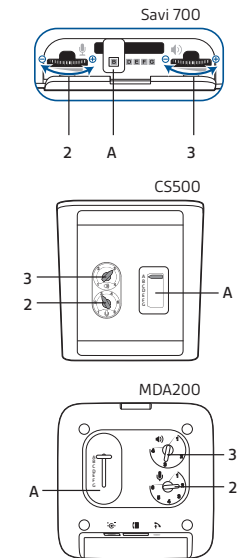


Cisco models: 8941, 8945

### Setup



### Configuration



# Electronic Hook Switch for NEC®



**NEC**



**Desk Phone Models**

DSX 34B BL	DTL series
DSX 34B FDX	DT 330
DTR series	DT 730
DTH series	DT750




**EHS Cable**




**APN-91**  
PN: 89280-11




**Plantronics Audio Solutions**




**Savi 700 Series**  
Wireless headset system manages PC, mobile and desk phone calls



**CS500/CS500 XD Series**  
Wireless headsets manage desk phone calls



**MDA200**  
Enables USB connectivity to the desk phone to manage both PC and desk phone calls

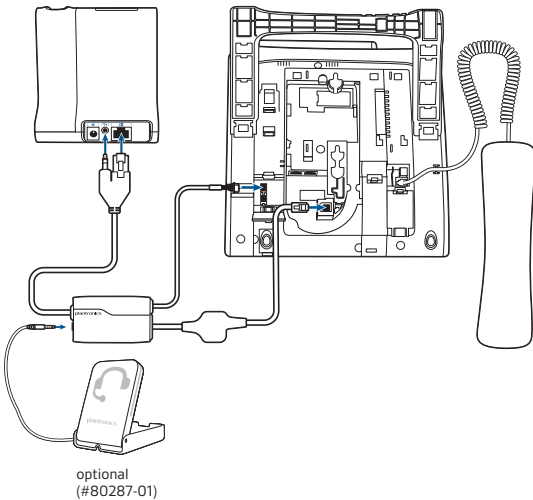


**Voyager Legend CS**  
Wireless Bluetooth headset system manages desk phone and mobile calls

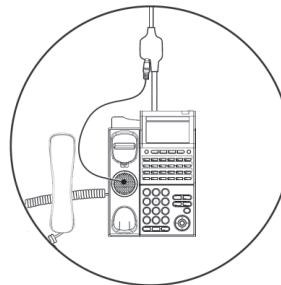
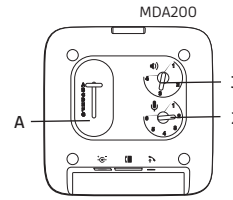
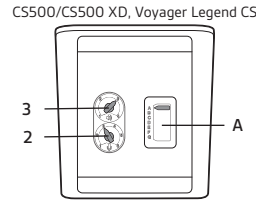
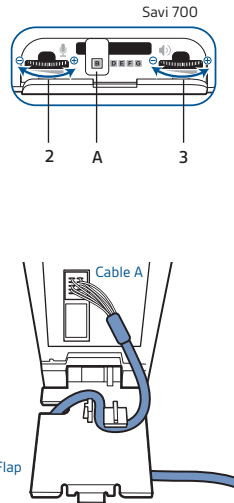
## EHS Setup Use the EHS setup below to automatically answer a desk phone call by pressing a button on your Savi 700 Series, CS500/CS500 XD Series or Voyager Legend CS headset or MDA200.

**NEC models:** DSX 34B BL, DSX 34B FDX, DTR series, DTH series, DTL series, DT 330, DT 730 and DT 750

### Setup



### Configuration



Install the ringer detect device on the phone over the speaker, under the handset. This is then plugged into the socket mounted midway along the audio cable. Supports only DT700/300 Series. Please contact NEC for more information.

**⚠ Note:** Disconnect the phone from the network cable prior to installing the EHS cable. Insert cable "A" per diagram, and install the plastic flap included with the APN-91 cable, per the diagram prior to reconnecting the network connection. Please wait 20-30 seconds after all connections are made before pressing the headset button to make a call. Please contact NEC for more information.

*\*The NEC DT Series phones come in 2 versions, the std SIP (used with NEC product SIP@NET and 3C) and the i-SIP/N-SIP versions which are used with the SV8100, SV8300 and SV8500. The APN-91 only works with the i-SIP/N-SIP versions of the DT700 terminals.*

For phone set-up, please refer to your specific phone manufacturers instructions.

# Electronic Hook Switch for Polycom®




**Polycom**

**Desk Phone Models**

- SoundPoint® IP 320
- SoundPoint IP 321
- SoundPoint IP 330
- SoundPoint IP 331
- SoundPoint IP 335
- SoundPoint IP 430
- SoundPoint IP 450
- SoundPoint IP 550
- SoundPoint IP 560
- SoundPoint IP 650
- SoundPoint IP 670
- VVX300 VVX500
- VVX310 VVX600
- VVX400 VVX1500
- VVX410







**EHS Cable**



**APP-51\***  
PN: 38439-11

\* APP-51 replaces APP-50

**Plantronics Au**

**Savi 700 Series**  
Wireless headset system manages PC, mobile and desk phone calls

**CS500/CS500 XD Series**  
Wireless headsets manage desk phone calls

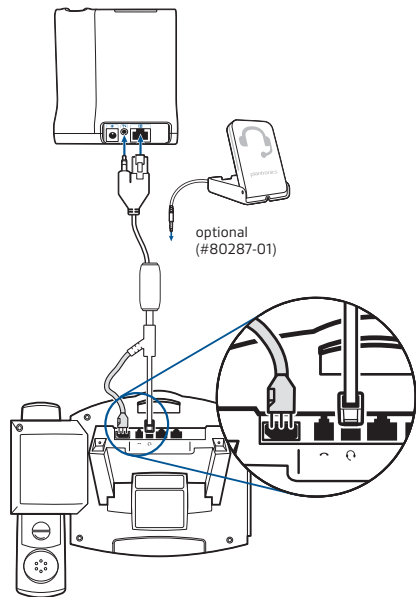
**MDA200**  
Enables USB connectivity to the desk phone to manage both PC and desk phone calls

**Voyager Legend CS**  
Wireless Bluetooth headset system manages desk phone and mobile calls

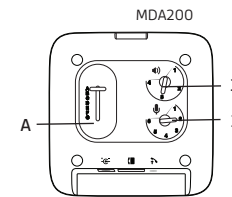
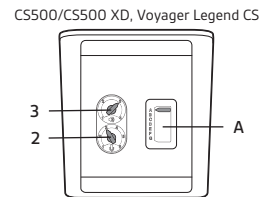
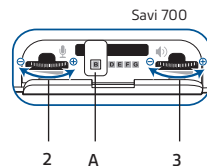
## EHS Setup Use the EHS setup below to automatically answer a desk phone call by pressing a button on your Savi 700 Series, CS500/CS500 XD Series or Voyager Legend CS headset or MDA200.

**Polycom models:** SoundPoint IP 320, 321, 330, 331, 335, 430, 450, 550, 560, 650, 670, VVX300, VVX310, VVX400, VVX410, VVX500, VVX600, VVX1500

### Setup



### Configuration



**Notes:**


- 1) To configure the phone for EHS, navigate to: **Menu>Settings>Basic>Preferences>Headset>Analog Headset** then select **Plantronics Mode**.
- 2) IP320/321 and IP330/331 require Polycom 2.5mm adapter 2200-11095-002.



# Electronic Hook Switch for ShoreTel®



**ShoreTel**



**Desk Phone Models**

IP212K	IP480G	IP565 (g)
IP230	IP485G	IP655*
IP265	IP560	
IP480	IP560 (g)	

+

**EHS Cable**



**RD-1**  
PN: 78887-01

*\* IP 655 uses APD-80 with ShoreTel software version 14 and above*

+

**Plantronics Audio Solutions**



**Savi 700 Series**  
Wireless headset system manages PC, mobile and desk phone calls



**CS500/CS500 XD Series**  
Wireless headsets manage desk phone calls



**MDA200**  
Enables USB connectivity to the desk phone to manage both PC and desk phone calls

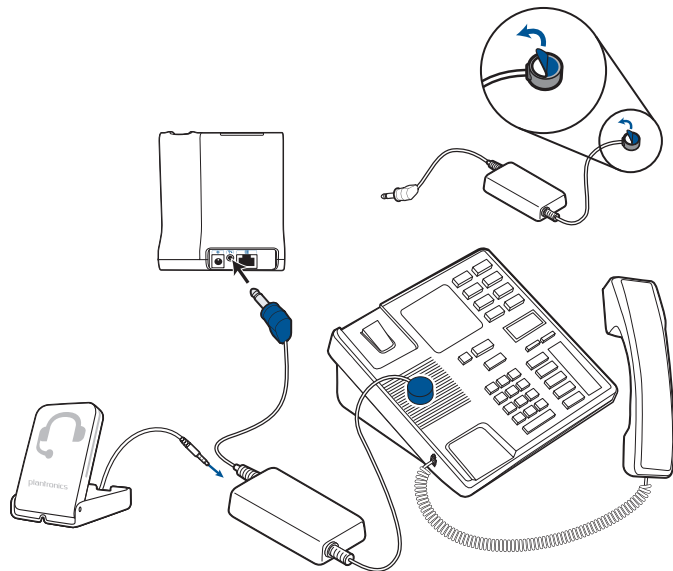


**Voyager Legend CS**  
Wireless Bluetooth headset system manages desk phone and mobile calls

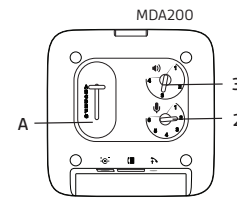
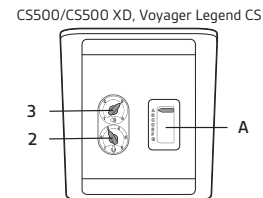
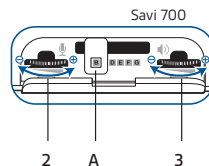
## EHS Setup Use the EHS setup below to automatically answer a desk phone call by pressing a button on your Savi 700 Series, CS500/CS500 XD Series or Voyager Legend CS headset or MDA200.

ShoreTel models: IP 212K, 230, 265, 480, 480G, 485G, 560, 560G, 565G, 655

### Setup




### Configuration



# Electronic Hook Switch for Unify



**Unify**




**Desk Phone Models**

Optipoint 410	OpenStage 30
Optipoint 420	OpenStage 40
Optipoint 500	OpenStage 60
Optipoint 600	OpenStage 80
OpenScape 35G	
OpenScape 55G	



**EHS Cable**



**APS-11\***  
PN: 37818-11

\* APS-11 replaces APS-10



**Plantronics Audio Solutions**




**Savi 700 Series**  
Wireless headset system manages PC, mobile and desk phone calls



**CS500/CS500 XD Series**  
Wireless headsets manage desk phone calls



**MDA200**  
Enables USB connectivity to the desk phone to manage both PC and desk phone calls

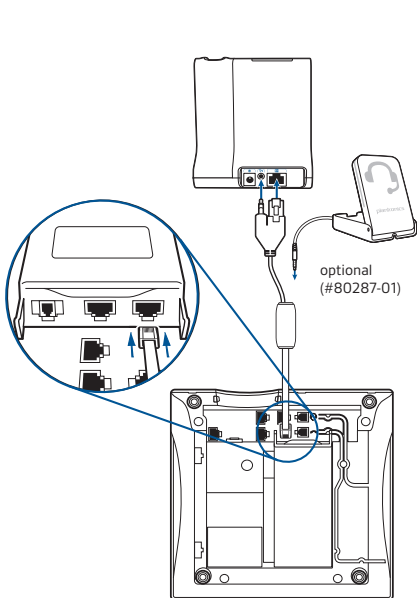


**Voyager Legend CS**  
Wireless Bluetooth headset system manages desk phone and mobile calls

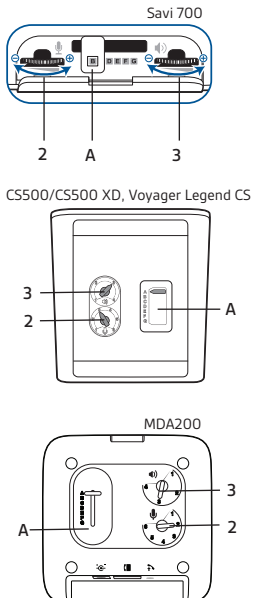
## EHS Setup Use the EHS setup below to automatically answer a desk phone call by pressing a button on your Savi 700 Series, CS500/CS500 XD Series or Voyager Legend CS headset or MDA200.

**Unify models: Optipoint 410, 420, 500, 600**

### Setup

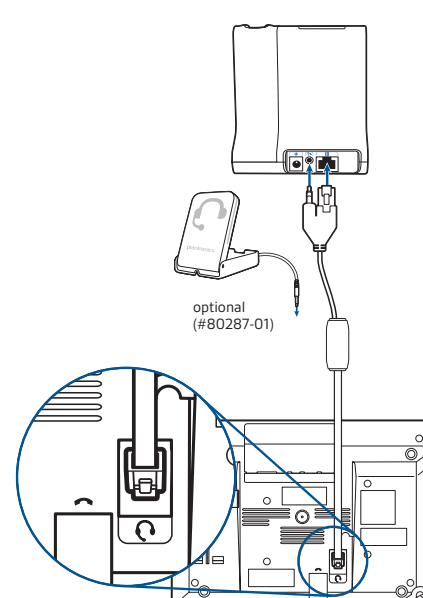


### Configuration

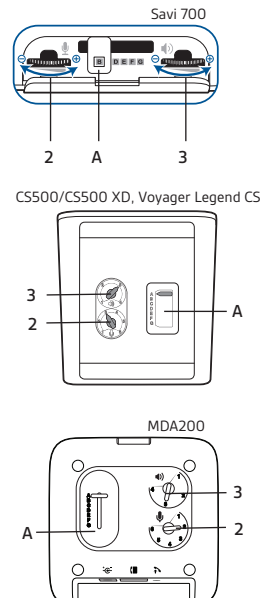


**Unify models: OpenStage 30, 35G, 40, 55G, 60, 80**

### Setup



### Configuration



# Electronic Hook Switch for Toshiba®



**Toshiba**



**Desk Phone Models**  
 DP 5118-DP    IPT 2008-SDL  
 DP 5130-SDL    IPT 2010-SD  
 DP 5X22-SD    IPT 2020-SD  
 DP 5X32-SD

+

**EHS Cable**



**RD-1**  
 PN: 78887-01

+

**Plantronics Audio Solutions**



**Savi 700 Series**  
 Wireless headset system manages PC, mobile and desk phone calls



**CS500/CS500 XD Series**  
 Wireless headsets manage desk phone calls



**MDA200**  
 Enables USB connectivity to the desk phone to manage both PC and desk phone calls

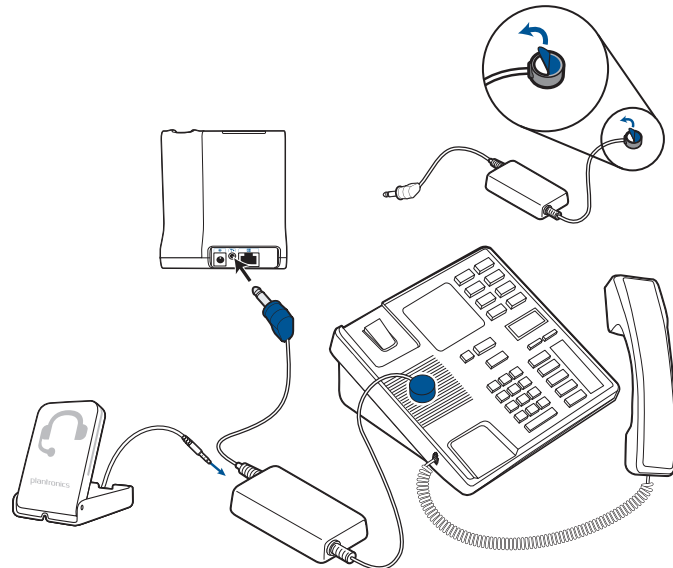


**Voyager Legend CS**  
 Wireless Bluetooth headset system manages desk phone and mobile calls

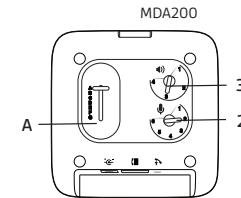
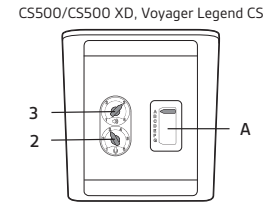
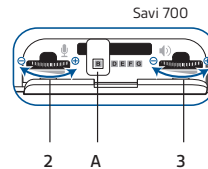
## EHS Setup Use the EHS setup below to automatically answer a desk phone call by pressing a button on your Savi 700 Series, CS500/CS500 XD Series or Voyager Legend CS headset or MDA200.

**Toshiba models:** DP 051180-DP, DP 5130-SDL, DP 5X22-SD, DP-5X32, IPT 2008-SDL, IPT 2010-SDL, IPT 2020-SD

### Setup



### Configuration







**plantronics.**

Plantronics  
345 Encinal Street  
Santa Cruz, CA 95060

[plantronics.com](http://plantronics.com)

©2014 Plantronics, Inc. All rights reserved. Plantronics, CS500 Series, MDA200, Voyager Legend, Savi, and the Sound World graphic are trademarks or registered trademarks of Plantronics, Inc. All other trade names and trademarks are the property of their respective owners. 02.14