

Jabra[®]
YOU'RE ON

Jabra SPEAK™ 510



USER MANUAL

A BRAND BY

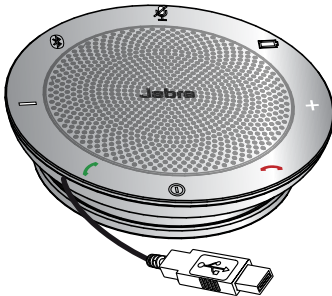
GN Netcom

CONTENTS

WELCOME.....	2
JABRA SPEAK 510 OVERVIEW	3
CONNECTING	5
HOW TO USE THE JABRA SPEAK 510	8
SUPPORT.....	11
TECHNICAL SPECIFICATIONS	12

WELCOME

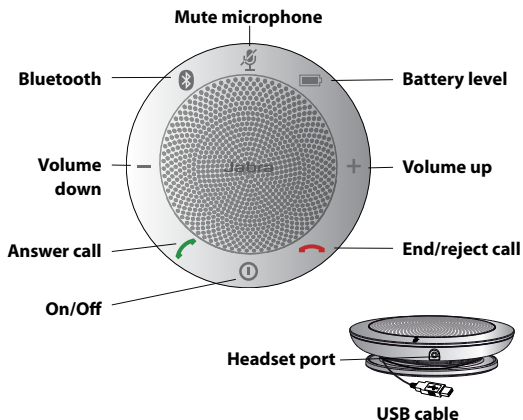
Thank you for purchasing the Jabra Speak 510. We hope you will enjoy it!



JABRA SPEAK 510 FEATURES

- Answer, end, reject and mute calls.
- Connect wirelessly to a PC or mobile device via Bluetooth.
- Connect to PC via USB.
- Portable.
- Omni-directional microphone.
- Wideband (HD) audio for exceptional sound quality.
- Call waiting (requires supported softphone with call waiting functionality).
- LED, audio indicators and voice guidance .

JABRA SPEAK 510 OVERVIEW



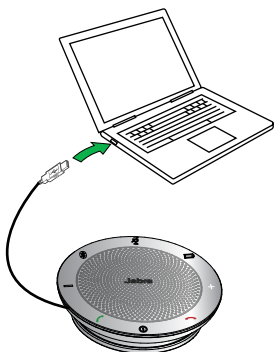
TURN ON THE JABRA SPEAK 510

- Plug the Jabra Speak 510 USB cable into any available USB port on your PC, or
- Press and hold (2 secs) the **On/Off** button to turn the Jabra Speak 510 on or off.



CHARGING THE JABRA SPEAK 510

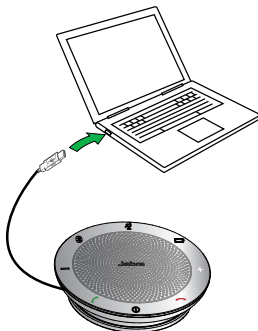
Plug the Jabra Speak 510 USB cable into any available USB port on your PC to charge the battery. The battery light is red when charging, and green (1 minute) when fully charged.



CONNECTING

CONNECT TO PC (USB)

1. Plug the Jabra Speak 510 USB cable into any available USB port on your PC.
2. Select the Jabra Speak 510 as the default audio device in Windows control panel, and in your softphone settings.



CONNECT TO MOBILE DEVICE (BLUETOOTH)

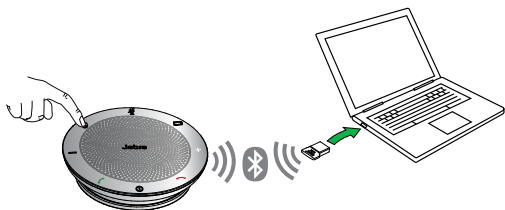
1. Press and hold (2 secs) the **Bluetooth** button on the Jabra Speak 510 until the Bluetooth light flashes blue. Release the button when you hear the connection instructions.
2. Enable Bluetooth on your mobile device, and select the Jabra Speak 510 from the list of available Bluetooth devices. If prompted for a password enter 0000.



CONNECT TO JABRA LINK 360

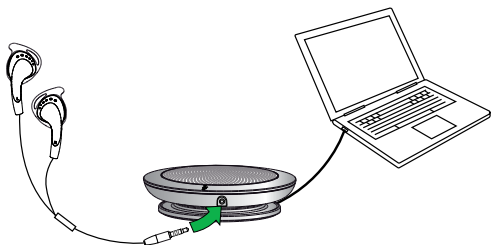
1. Press and hold (2 secs) the **Bluetooth** button on the Jabra Speak 510 until the Bluetooth light flashes blue. Release the button when you hear the connection instructions.
2. Plug the Jabra Link 360 into any available USB port on your PC.
3. The connection is established when the light turns solid blue.

Note: ensure that all Bluetooth devices previously connected to the Jabra Link 360 are switched off.



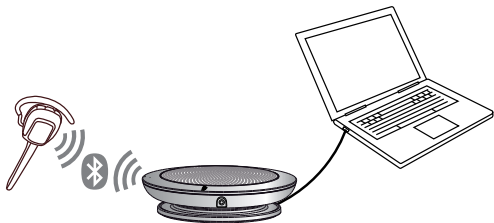
CONNECT TO CORDED HEADSET

Plug a corded headset into the Jabra Speak 510 headset port.

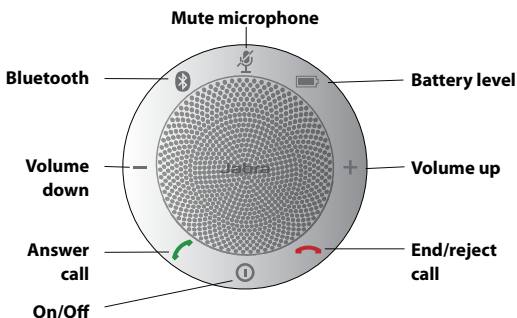









CONNECT TO BLUETOOTH HEADSET

1. Plug the Jabra Speak 510 into any available USB port on your PC.
2. Put the Bluetooth headset into pairing mode (refer to your headset manual for instructions).
3. Press and hold (8 secs) the **Bluetooth** button on the Jabra Speak 510 until the Bluetooth light flashes blue and then flashes green. Release the button when you hear 'Connect to headset'.
4. The connection is established when the light turns solid blue. All audio on the PC will transfer to the Bluetooth headset.





HOW TO USE THE JABRA SPEAK 510



	On/Off	Press and hold (2 secs) the On/Off button until the lights flash
	Answer call	Tap the Answer call button
	End call	Tap the End/reject call button
	Reject call	Tap the End/reject call button
	Speaker volume	Tap the Volume up or Volume down button
	Battery status	Tap the Battery status button to display the current battery level
	Connect with new Bluetooth device	Press and hold (2 secs) the Bluetooth button to connect with a new Bluetooth device
	Reconnect/disconnect with Bluetooth device	Tap the Bluetooth button to reconnect/disconnect with a Bluetooth device
	Mute microphone	Tap the Mute microphone button

MULTIPLE CALL HANDLING

The Jabra Speak 510 can accept and handle multiple calls simultaneously.

	Put current call on hold and answer incoming call	Tap the Answer call button
	Switch between held call and active call	Tap the Answer call button
	Reject incoming call	Tap the End/reject call button

SWITCH BETWEEN BLUETOOTH DEVICES

1. Press and hold the **Bluetooth** button and tap the **Volume up** or **Volume down** button to cycle between the connected devices. The connected devices will be announced.
2. Release the Bluetooth button when the correct device is announced. The Jabra Speak 510 will establish a connection with the device. When a connection has been established the device will be announced.



WHAT THE VOICE GUIDANCE MEANS

What you hear	Description
	Go to the Bluetooth menu on your mobile device and connect to Jabra Speak 510
	Connect to Mobile device
	Connect to Jabra Link 360
	Connect to Headset
	Connected to mobile device
	Connected to Jabra Link 360
	Connected to headset
	Voice guidance on
	Voice guidance off
	Connect to headset. Put your headset in pairing mode and wait for a connection to be established

SUPPORT

FAQ

Q I hear crackling noises

A Bluetooth is a radio technology that is sensitive to objects between the Jabra Speak 510 and the connected device. Ensure the Jabra Speak 510 and the connected device are within range (up to 100 meters or 330 feet).

Q I cannot hear anything

A - Increase the speaker volume.
- Ensure that the Jabra Speak 510 is connected to a device.

Q I am having Bluetooth connection problems

A Check your mobile device's Bluetooth menu and delete/forget the Jabra Speak 510. Re-connect the Jabra Speak 510 to your Bluetooth device following the Bluetooth connection instructions.

Q Will the Jabra Speak 510 support other Bluetooth equipment?

A The Jabra Speak 510 is designed to work with Bluetooth mobile devices. It can also support other Bluetooth devices that can support a headset, hands-free and/or advance audio distribution profile.

HOW TO CARE FOR YOUR JABRA SPEAK 510

- Always store the Jabra Speak 510 with the power off and safely protected.
- Avoid storage at extreme temperatures (above 70°C/158°F or below -40°C/-40°F). This can shorten battery life and may affect operation. High temperatures may also degrade performance.
- Do not expose the Jabra Speak 510 to rain or other liquids.

TECHNICAL SPECIFICATIONS

Weight:

195g

Dimensions:

L 120mm x W 120mm x H 33mm

Microphone:

Omni-directional

Speaker:

Dynamic, 50mm

Operating range:

Up to 100m (330 feet)

Bluetooth version:

Bluetooth version 3.0

Paired devices:

Up to 8 trusted devices

Supported Bluetooth profiles:

A2DP, Hands Free Profile (v1.6), Headset profile

Talk time:

Up to 15 hours

Operating temperature:

-20°C to 45°C (-4°F to 113°F)

Storage temperature:

-40°C to 70°C (-40°F to 158°F)

Pairing passkey or PIN:

0000

Jabra®
YOU'RE ON



A BRAND BY

GN Netcom

© 2013 GN Netcom US, Inc. All rights reserved. Jabra® is a registered trademark of GN Netcom A/S. All other trademarks included herein are the property of their respective owners. The Bluetooth® word mark and logos are owned by the Bluetooth SIG, Inc. and any use of such marks by GN Netcom A/S is under license. (Design and specifications subject to change without notice).

© 2013 GN Netcom A/S. All rights reserved. Jabra® is a registered trademark of GN Netcom A/S. All other trademarks included herein are the property of their respective owners. The Bluetooth® word mark and logos are owned by the Bluetooth SIG, Inc. and any use of such marks by GN Netcom A/S is under license. (Design and specifications subject to change without notice).

Made in China
MODEL: PHS002W



www.jabra.com