

Avaya Deskphones

APV60 cable needed for 1608, 1616, 2410, 4630, 5410, 6416D&M, 6424D&M and 9600 phones

APV65 cable needed for 2420, 4610SW, 4620, 4620SW, 4621SW, 4622SW, 4625SW, 4630SW, 5420, 5610 and 5620 phones



Please check plantronics.com for more phone options.

Savi Office

ORDER INFORMATION



Savi™ Office

Designed for seamless communication

Next generation of wireless headsets to maximize collaboration through multiple devices. Enterprise grade headset system providing excellent sound quality.

WO100
(Convertible headset system)

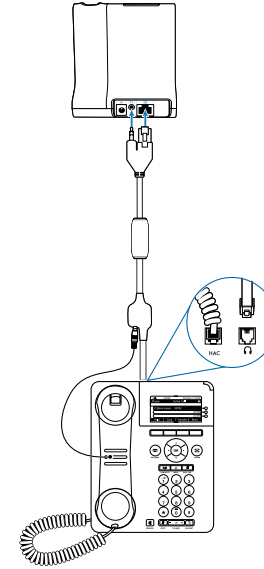
REMOTE CALL ANSWERING

Requires following EHS solution to automatically answer a call by pressing a button on the headset.

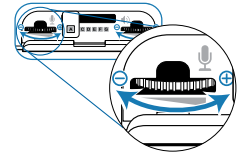
APC-60 (sold separately)
APC-65 (sold separately)



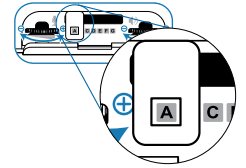
SET UP INFORMATION



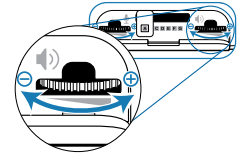
Set desk phone speaking volume to 2



Configuration switch



Set desk phone listening volume to 3



Avaya AWH75N/AWH55+/AWH450/AWH460N

ORDER INFORMATION



Avaya AWH75N Wireless

Stylish and discreet

Combining the excellent sound quality and range of DECT™ with the design edge of a mobile headset.

AWH75N



Avaya AWH55+ Wireless

Flexible, cost effective and convenient

Cost-effective wireless headset with great range and sound quality and a choice of wearing styles.

AWH55+



Avaya AWH450/460N Wireless

All-day wearing comfort

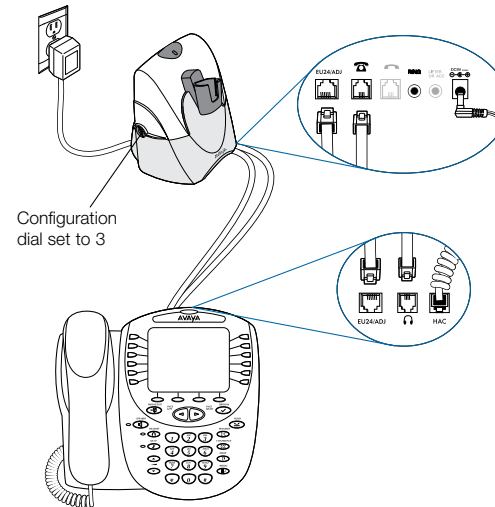
For intensive phone users—the ultimate comfort and sound quality—with the option of binaural style for noisy environments.

AWH450N Monaural
AWH460N Binaural

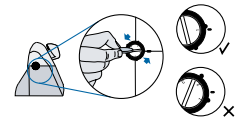
SET UP INFORMATION

For set up with AVAYA 2420, 4610SW, 4620, 4620SW, 4621SW, 4622SW, 4625SW, 4630SW, 5420, 5610 and 5620 telephones*

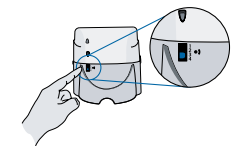
For a complete set up list please refer to the user guide.



Set rotary switch to 1



Set rear slide switch to 3



Set bottom slide switch to B

