

EXTREME NOISE CANCELLATION

Jabra EXTREME reduces background noise through its Noise Blackout[™] Extreme technology while enhancing the natural sound of your voice.

easy smart ◀ ultimate

The best noise cancellation anytime, everywhere

Building upon Jabra's renowned noise cancellation technology, Jabra EXTREME utilizes Noise Blackout[™] Extreme, which significantly enhances its dual microphone system. This is supported by the new advanced automatic volume control that automatically adjusts to the environment and your conversation. These developments have led Jabra EXTREME to be remarkably 2x more effective in noisy environments (by 24dB) than the original Noise Blackout (12dB).

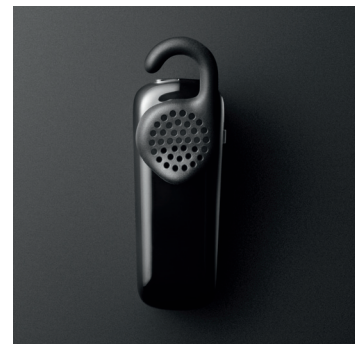
What will further amaze end-users is the voice quality; while Jabra EXTREME eliminates ambient noise it retains natural sounding voice on both ends of the line ensuring your conversation is full of life rather than a robotic exchange of words.

Jabra EXTREME's distinctive Ultimate-fit Eargel[™] not only ensures a secure, comfortable fit, it also contains specially designed holes for optimum incoming sound, which adds to Jabra EXTREME's superb overall sound quality.



Reasons to choose the Jabra EXTREME

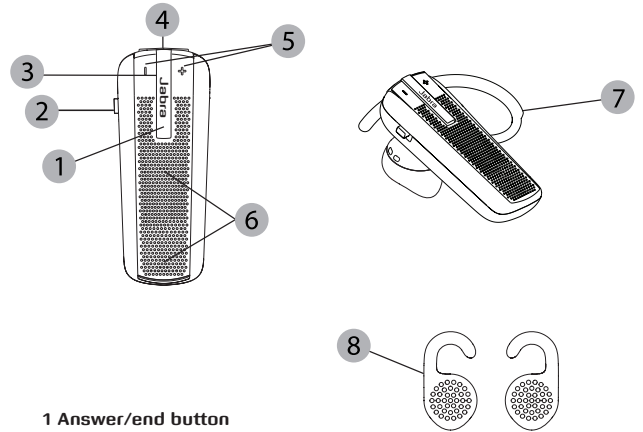
- Eliminates background noise with dual mic technology
- Clear sound in noisy environments
- All day comfort with Ultimate-fit Eargels[™]



A BRAND BY



JABRA[®] IS A REGISTERED TRADEMARK OF GN NETCOM A/S



1 Answer/end button
Tap to answer/end call

2 On/off button
Slide to turn on/off
(with green/red color)

3 Light indicator (LED)
Shows battery and call status

4 Charger socket
Easy charging with AC power supply, Car charger and/or USB adaptor

5 Volume buttons
Tap volume + or volume - to adjust the volume

6 Dual Microphones

7 Ear hook in two sizes (S,L)

8 Ultimate-fit Eargels™

Quick Start Guide

Charging your headset

Charge your Jabra EXTREME until the LED light turns solid green.

Turning your headset on and off

Slide on/off button to turn the headset on or off. The LED will turn green when the headset is on.

Pairing the headset with your phone

- 1.a. First time pairing with a phone that has Bluetooth 2.1: Turn headset on - automatic pairing mode when LED is lit blue constantly.
- 1.b. Later pairing: Turn headset on. Press and hold answer/end button until solid blue light comes on.
2. Activate Bluetooth® on your phone.
3. Search for Bluetooth® devices and select Jabra EXTREME.
4. Press 'OK' on the phone and confirm. If asked for, use the PIN code = 0000 (4 zeros)

Using your headset

Answer a call - Tap the answer/end button

End a call - Tap the answer/end button

Wearing it how you like it

Wear the Jabra EXTREME with or without an ear hook.

To wear with ear hook, please attach for right or left ear wearing.

To wear without ear hook please use the new Ultimate-fit Eargel™

Features and Specifications

1. Noise Blackout™ Extreme -technology with two noise cancellation microphones
2. Crystal Clear sound by advanced DSP (digital signal processing) technology
3. Intelligent volume control & Audio shock protection
4. High Performance with Bluetooth 2.1 EDR & eSCO
5. Multiuse™ connects up to 8 devices - 2 at the same time
6. Dual wearing style with new Ultimate-fit Eargels™ and flexible ear hooks in two sizes (S, L)
7. Dedicated on/off switch
8. Up to 5.5 hours talk time and up to 10.5 days standby time
9. Lightweight - weighs only 10g
10. L 1.9 x W 0.7 x H 1.1 in (L 47 x W 18.5 x H 27.5 mm)
11. Battery Status Indicator
12. Features answer call, end call, reject call, voice dialling, last number redial, mute, call waiting, put call on hold, volume control
13. Charging plug: USB Micro-B, 5-pin

* Some features are device dependent



A BRAND BY

GN Netcom

JABRA® IS A REGISTERED TRADEMARK OF GN NETCOM A/S

WWW.JABRA.COM/EXTREME

