



Jabra Evolve 75

The best wireless headset for concentration in the open office*

The Evolve 75 is a wireless headset with superior Active Noise Cancellation and integrated busylight to enhance your productivity.

Dual connectivity to two Bluetooth® devices allows you to take calls and listen to music from the same headset, giving you extra freedom to move 100ft/30m away from your smartphone and/or PC.

Outstanding sound for calls and music

HD voice for your calls and world class speakers for music.

Reduce noise and interruptions

Superior ANC and integrated busylight acting as a do not disturb signal.

More freedom

Dual Bluetooth® connectivity to two devices at the same time for calls and music, with the flexibility to move up to 100feet/30 meters away from your connected device.

More reasons to choose

Jabra Evolve 75

- All-day comfort leather feel ear cushions and an on-the-ear wearing style for all day comfort
- Works with all UC platforms – certified for Skype for Business, Cisco and more
- Easy charging and docking comes with an optional charging stand to eliminate battery concerns

Works with

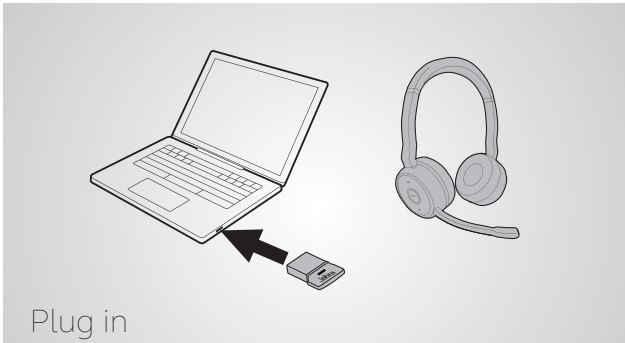


For compatibility information go to jabra.com



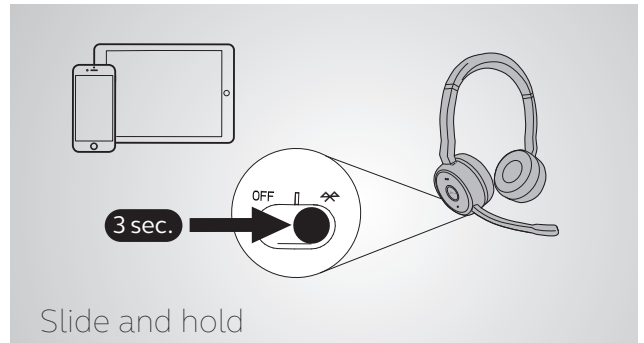
How to connect

PC



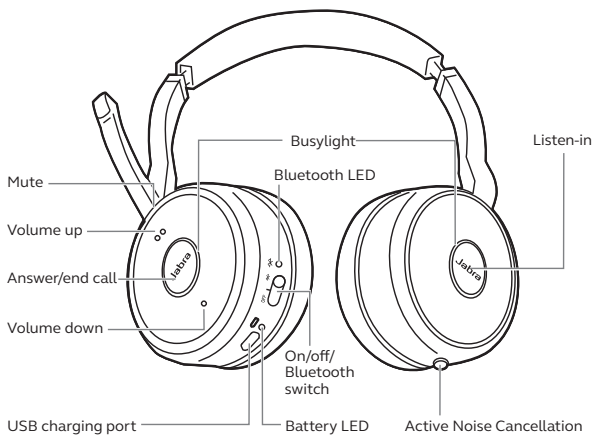
The headset and the USB dongle are pre-paired and ready for use.

Smartphone



Switch on Bluetooth pairing and then follow the voice-guided instructions in the headset.

How to use



Listen-in
Listen to your surroundings without taking off your headset.

Active Noise Cancellation
Eliminate unwanted background noise at the touch of a button.

Charging
Use the USB cable or charging stand. The charging stand should be plugged into a powered USB port on your PC, docking station, or wall charger.

It takes approx. 3 hours to fully charge the headset.

| | Features | Benefits | Jabra Evolve 75 |
|---------------------|---|---|-----------------|
| Connectivity | Jabra Link 370 USB Adapter | Wireless range of up to 100 feet / 30 meters | ■ |
| | Dual Bluetooth® connectivity- for PC, smartphone and Tablet | Dual Bluetooth® connectivity to two Bluetooth® devices at the same time | ■ |
| | USB cable | Use the headset for calls and music whilst charging at the same time | ■ |
| | Full compatibility with UC systems & VoIP clients | Seamless integration and call control with leading UC systems/PC softphones | ■ |
| Audio | HiFi Audio | Best-in-class sound performance including HiFi audio streaming | ■ |
| | Superior ANC | Eliminate background noise at the touch of a button | ■ |
| Ease of use | Rechargeable battery | Up to 15 hours battery life | ■ |
| | All day comfort | All-day comfort leather feel ear cushions and an on-the-ear wearing style for all day comfort | ■ |
| | Busylight | Integrated busylight on both ear cups acting as a do not disturb signal | ■ |
| | Volume controls | Speaker volume up/down on headset | ■ |
| | Discreet boomarm | Boom arm can be clipped into the headband when not on calls | ■ |
| | Listen-In | Easy to reach button on ear cup to hear announcements without removing the headset | ■ |
| Accessories | Charging stand* | Easy charging and docking comes with an optional charging stand to eliminate battery concerns | ■ |

*optional to purchase separately