



Conference phones for every situation

# Guide for connecting a wireless headset to the Konftel 300

ENGLISH



# INSTALLATION

A wireless headset software upgrade can be added to provide greater flexibility to your Konftel 300. The microphone on the Konftel 300 and the headset microphone are simultaneously active. The headset helps to improve audio clarity when one person is more active in the conversation. It also enables you to move about and turn away from the Konftel 300, for example, if you need to write on a whiteboard without loss of audio quality.

Refer to the Konftel website, [www.konftel.com/300](http://www.konftel.com/300) for compatibility and recommended headset settings.

## Upgrade your Konftel 300



### PREPARATION

Open Konftel PC Suite from the Start-Menu on your computer. Click "Next" to proceed.

If you not have the Konftel PC Suite installed on your computer, enter [www.konftel.com/upgrades](http://www.konftel.com/upgrades) to download.

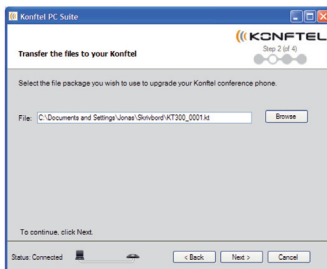
Make sure that you have the Konftel upgrade file for wireless headset is available.



### STEP I

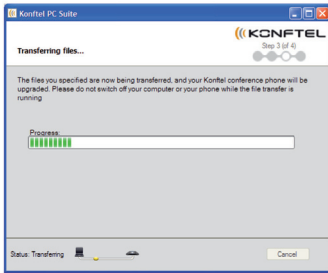
Set the Konftel 300 in upgrade mode and connect it to your computer via USB. Follow these instructions:

1. Remove the power plug from your Konftel 300.
2. Press and hold the MENU button on your phone keypad.
3. Reinsert the power plug into your Konftel unit.
4. Release the MENU button.
5. The blue diodes lights up when the Konftel 300 is set in Upgrade mode.
6. Click Next.

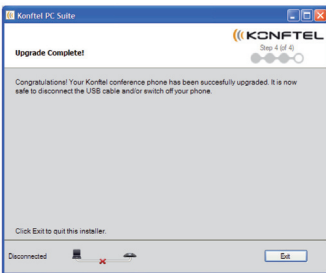


### STEP II

Select the upgrade file. Use the "Browse" button to browse for your upgrade file (indicated by the .kt extension).



**STEP III**  
The upgrade is downloaded to your Konftel 300.



**STEP IV**  
The upgrade is completed. Exit the Konftel PC Suite.

Restart your Konftel conference phone by remove and reinsert the power plug. A message will indicate that an upgrade is added to your Konftel 300.

## Connecting a wireless headset to your Konftel 300

Connect the AUX outlet underneath the Konftel 300 and the headset phone connection using the telephone cord included in headset.

Adjust the levels according to the headset manual.

To adjust the headset, move away from the Konftel 300 so that your voice can not be picked up from the Konftel 300 microphone. Move into another room if the room is not large enough.



**Please note!** Always disconnect the power supply from the electrical outlet when disconnecting or connecting equipment to the Konftel 300.

## Privacy mode

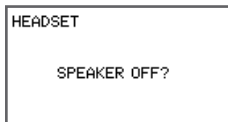
If privacy is needed during a conversation, turn off the Konftel speakers to only use the headset as the audio output.



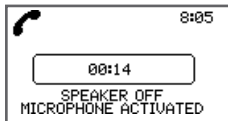
During a call, press MENU to select headset.



Press OK to enter headset menu.



Turn off speaker by pressing the OK button.



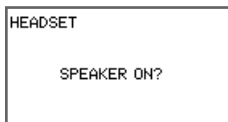
The display will now indicate that the speaker is off but the microphone is still active.



To activate the Konftel speakers again, press MENU.



Press OK to enter the headset menu.



Activate the speakers by pressing the OK button, The Konftel 300 is now working normally.