

 **BUY NOW**

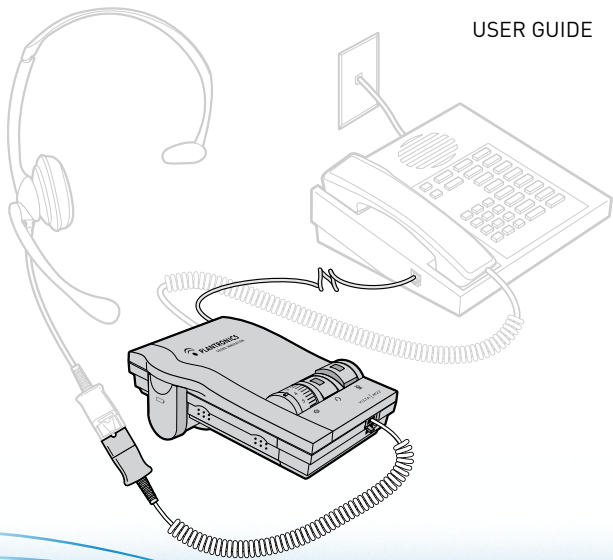


**PLANTRONICS**  
SOUND INNOVATION™

**VISTA™ M22**

UNIVERSAL MODULAR AMPLIFIER

USER GUIDE



## WELCOME

---

### TO THE VISTA™ M22 UNIVERSAL MODULAR AMPLIFIER FROM PLANTRONICS®

The Vista M22 Universal Modular Amplifier adapts your telephone to a Plantronics headset and provides control of the sound through your headset. The Vista M22 Amplifier has built-in sound conditioning and protection.

The Vista M22 Amplifier is not designed to work with telephones that have the dial pad in the handset or with cordless telephones.

## FEATURES


- Sound Compression which protects your ears from harsh noises, such as fax tones
- Audio compensation which improves listening and speaking sound
- Easy switching between handset and headset
- Listening and speaking volume control and a mute option
- Echo management for VoIP applications
- Supports wideband audio

**>>PLEASE READ IMPORTANT SAFETY INFORMATION FIRST**

## CONTENTS

<b>Welcome .....</b>	<b>2</b>
<b>Important Safety Information - READ FIRST .....</b>	<b>4</b>
Battery Safety .....	4
AC Adapter Safety .....	5
<b>Components of the Vista M22 .....</b>	<b>6</b>
<b>Setting up the Vista M22 .....</b>	<b>7</b>
Installing the Batteries .....	7
Attaching the Vista M22 to Your Telephone and Headset .....	7
Configuring the Vista M22 to Your Telephone .....	8
<b>Using the Vista M22 and Your Headset .....</b>	<b>9</b>
Making and Receiving Calls with Your Headset .....	9
Adjusting the Volume for Calls .....	10
Muting a Call .....	11
Making and Receiving Calls with the Handset .....	11
<b>Using the Optional AC Power Adapter .....</b>	<b>12</b>
<b>Warranty and Service .....</b>	<b>13</b>
<b>Regulatory Information .....</b>	<b>14</b>

## IMPORTANT SAFETY INFORMATION

 **WARNING:** To reduce the risk of fire or injury to persons, read and follow these instructions.

- This product is not a toy, never allow children to play with the product. Small parts may be a choking hazard.
- Unplug the product from the wall outlet before cleaning. Clean with damp cloth only.
- As with all corded products, there is a danger of strangulation if the cord should become wrapped around your neck.

### BATTERY WARNINGS

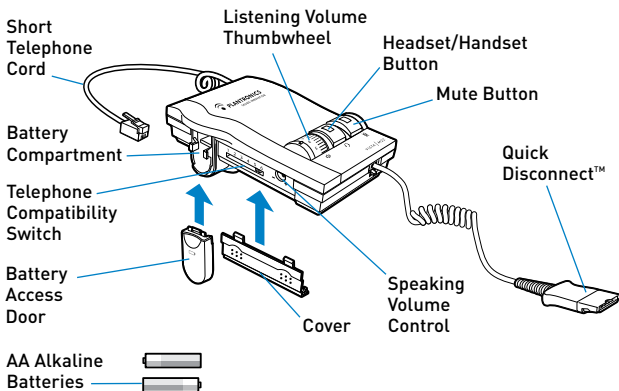
- Remove batteries when they are discharged and when the equipment will not be used for an extended period of time. Dispose of batteries according to local environmental laws.
- Do not disassemble, heat, crush, deform, or puncture batteries.
- Do not attempt to charge non-rechargeable batteries.
- Keep batteries out of the reach of children.

## AC ADAPTER WARNINGS

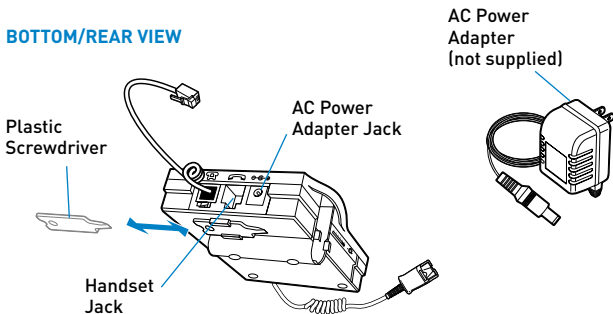
- Avoid contact with liquids. Do not locate base unit near water, for example, near a bathtub or sink, in a wet basement, or near a swimming pool.
- This product should be operated only from the type of power source indicated on the marking label. If you are not sure of the type of power supply to your home, consult your local power company.
- Do not allow anything to rest on the power cord or locate this product in an area where the power cord is likely to be damaged by furniture or foot traffic.
- Do not overload outlets and extension cords as this can result in the risk of fire or electric shock.
- Do not attempt to open the AC Adapter, there are potentially dangerous voltages inside, and there are no serviceable parts.
- Avoid using telephone equipment during an electric storm. There may be a remote risk of electric shock from lightning.
- If the AC Adapter is used, this product is intended to be supplied by a Listed Class 2 Direct Plug-In Power Unit, Plantronics Part No. 26503-01, rated at an input voltage of 120 VAC, 60 Hz and an output voltage of 9 VDC at 800mA.

# COMPONENTS OF THE VISTA™ M22

## TOP/FRONT VIEW



## BOTTOM/REAR VIEW

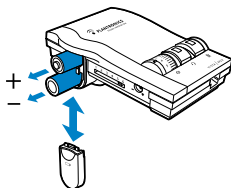


## SETTING UP THE VISTA M22

### INSTALLING THE BATTERIES

Install the two AA batteries in the Battery Compartment matching the + and – symbols inside the compartment.

Install the Battery Cover by sliding the cover up into place.



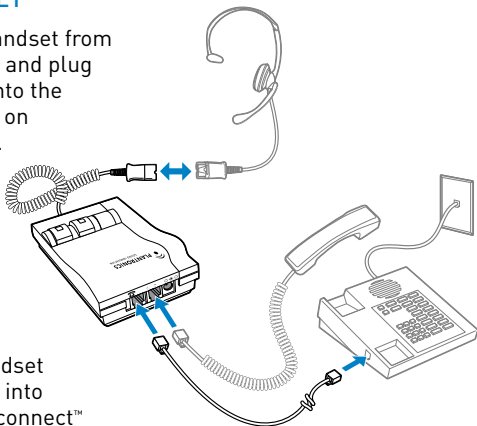
**NOTE:** *You will hear three “beeps” through the headset when the batteries are low.*

### ATTACHING THE VISTA M22 TO YOUR TELEPHONE AND HEADSET

Unplug the handset from the telephone and plug the handset into the Handset Jack on the Vista M22.

Connect the Short Telephone Cord to the handset jack on the telephone.

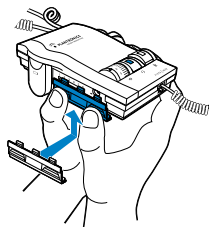
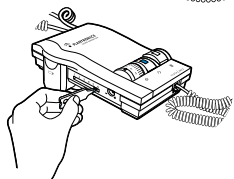
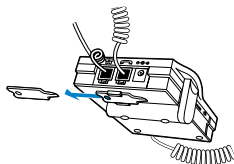
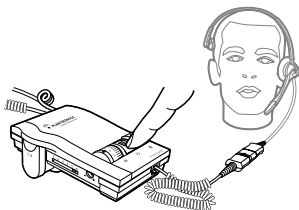
Plug your headset (not supplied) into the Quick Disconnect™ cord from the Vista M22.



## CONFIGURING THE VISTA M22 TO YOUR TELEPHONE

While wearing your headset, lift the handset from the telephone. If you do not hear a dial tone, the Vista M22 must be configured to be compatible with your telephone.

1. Press the Headset/Handset Button down to show the green indicator.
2. Slide the Plastic Screwdriver from its storage location on the underside of the Vista M22.
3. Use the Plastic Screwdriver to slide the Telephone Compatibility Switch to the left or right until you hear a clear dial tone.
4. Return the Plastic Screwdriver to its storage place.
5. Install the Cover by inserting the cover prongs into the slots on the Vista M22. Place your thumbs on the raised bumps. Press the Cover down and then push it up into place.



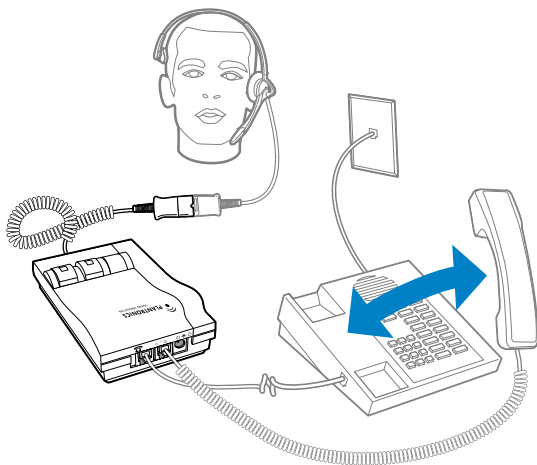


## USING THE VISTA M22 and YOUR HEADSET

### MAKING AND RECEIVING CALLS WITH YOUR HEADSET

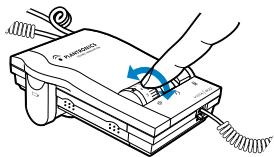
Press the Headset/Handset Button (green).

- To make a call while wearing the headset. Lift the handset from the telephone. Listen for a dial tone and dial.
- To receive a call, lift the handset from the telephone and speak into your headset.
- To disconnect a call, return the handset to the telephone.

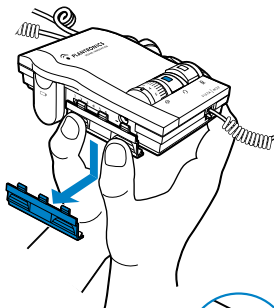


## ADJUSTING THE VOLUME FOR CALLS

To adjust your listening volume, rotate the Listening Volume Thumbwheel from 1 (quietest) to 9 (loudest).

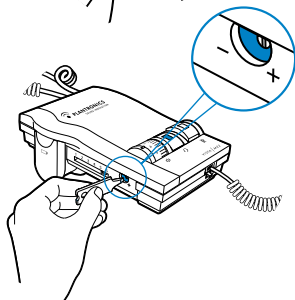


To adjust your speaking volume, remove the Cover from the Vista M22.



1. Use the Plastic Screwdriver to adjust the Speaking Volume Control.

- Turn the control clockwise to make your voice louder.
- Turn the control counter-clockwise to make your voice softer.

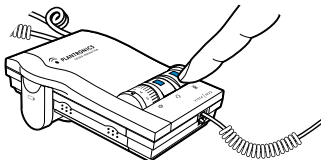


2. Replace the Cover and Plastic Screwdriver.

## MUTING A CALL

To turn on the mute, press the Mute Button to show the green indicator.

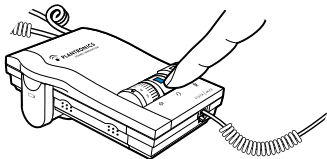
To turn off the mute, press the Mute Button again.



## MAKING AND RECEIVING CALLS WITH THE HANDSET

To turn off the headset, press the Handset/Headset Button to show the black indicator.

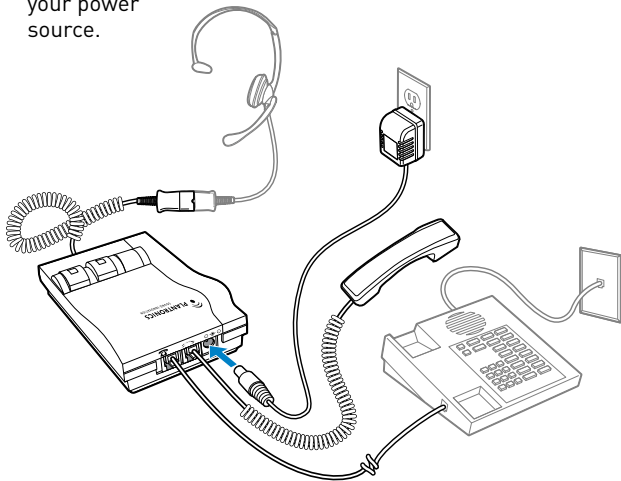
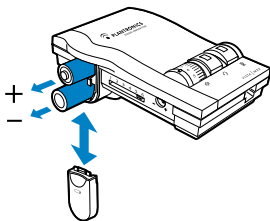
Use the handset and telephone to make your calls.



## USING THE OPTIONAL AC POWER ADAPTER (not supplied)

Using the AC Power Adapter is recommended for uninterrupted operation.

1. Remove the batteries from the Battery Compartment.
2. Connect the AC Power Adapter to the AC Power Adapter Jack on the Vista M22.
3. Plug the AC Power Adapter into your power source.



## WARRANTY AND SERVICE

LIMITED WARRANTY for Plantronics Commercial Products Purchased in the US and Canada

- This warranty covers defects in materials and workmanship of Commercial Products manufactured, sold or certified by Plantronics which were purchased and used in the United States and Canada.
- This warranty lasts for two years from the date of purchase of the Products.
- This warranty extends to you only if you are the end user with the original purchase receipt.
- We will, at our option, repair or replace the Products that do not conform to the warranty. We may use functionally equivalent reconditioned/refurbished/remanufactured/pre-owned or new Products or parts.
- To obtain service in the U.S., contact Plantronics at (800) 544-4660 ext. 5538 and in Canada call (800) 540-8363. If you need additional information, please contact our service centers at the numbers provided.
- THIS IS PLANTRONICS' COMPLETE WARRANTY FOR THE PRODUCTS.
- This warranty gives you specific legal rights, and you may also have other rights which vary from state to state or province to province. Please contact your dealer or our service center for the full details of our limited warranty, including items not covered by this limited warranty.

**The PLANTRONICS TECHNICAL ASSISTANCE CENTER (TAC)** is ready to assist you! Dial 800 544 4660 ext. 5538 or visit the support section of our website at [www.plantronics.com](http://www.plantronics.com).

For accessibility information, also call the Technical Assistance Center.

## FCC REQUIREMENTS

This equipment complies with Part 68 of the FCC rules and the requirements adopted by ACTA. On the exterior of this equipment is a label that contains a product identifier in the format US:AAAEQ##TXXXX. If requested, this information must be provided to your telephone company.

A plug and jack used to connect this equipment to the premises wiring and telephone network must comply with the applicable FCC Part 68 rules and requirements adopted by ACTA. A compliant telephone cord and modular plug is provided with this product. It is designed to be connected to a compatible jack that is also compliant. See installation instructions for details.

The REN is useful to determine the quantity of devices you may connect to your telephone line. Excessive RENs on a telephone line may result in the devices not ringing in response to an incoming call. In most, but not all areas, the sum of the RENs should not exceed five (5.0). To be certain of the number of devices you may connect to your line, as determined by the REN, contact your local telephone company. For product approved after July 23, 2001, the REN for this product is part of the product identifier that has the format US:AAAEQ##TXXXX. The digits represented by ### are the REN without the decimal point. (For example, 03 represents a REN of 0.3.) For earlier producers, the REN is separately shown on the label.

If this telephone equipment causes harm to the telephone network, the telephone company will notify you in advance that temporary discontinuance of service may be required. But if advance notice isn't practical, the telephone company will notify

the customer as soon as possible. Also, you will be advised of your right to file a complaint with the FCC if you believe it is necessary.

The telephone company may make changes in its facilities, equipment, operations, or procedures that could affect the proper functioning of your equipment. If they do, you will be notified in advance in order for you to make necessary modifications to maintain uninterrupted service.

If trouble is experienced with this unit, for repair or warranty information, please contact customer service at (800) 544-4660. If the equipment is causing harm to the network, the telephone company may request that you disconnect the equipment until the problem is resolved.

**DO NOT DISASSEMBLE THIS EQUIPMENT:** it does not contain any user serviceable components.

We recommend the installation of an AC surge arrester in the AC outlet to which this equipment is connected. Telephone companies report that electrical surges, typically lighting transients, are very destructive to customer terminal equipment connected to AC power sources.



**PLANTRONICS**  
SOUND INNOVATION™

[www.plantronics.com](http://www.plantronics.com)

345 ENCINAL STREET | SANTA CRUZ, CA 95060 USA | PHONE: 800 544 4660

---

© 1998-2006 Plantronics, Inc. All rights reserved. Plantronics, the logo design, Sound Innovation, Quick Disconnect, and Vista are trademarks or registered trademarks of Plantronics, Inc.

Patents US 5,229,721 and 5,259,780

Printed in USA

74781-01 (10.06)