

# CS510™/CS520™

## Wireless Headset System

### User Guide

# Contents

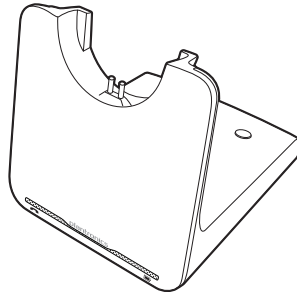
|   |    |
|---|----|
| Welcome                                       | 3  |
| What's in the Box                             | 4  |
| Base and Headset Basics                       | 5  |
| Accessories                                   | 6  |
| Headset Set Up                                | 7  |
| Connect Your Desk Phone                       | 8  |
| Connect the Power                             | 8  |
| Charge the Headset                            | 8  |
| Connect and Configure Your Desk Phone         | 9  |
| Desk Phone (standard)                         | 9  |
| Check Configuration and Make a Test Call      | 10 |
| Desk Phone plus HL10 Lifter (sold separately) | 11 |
| Desk Phone plus EHS Cable                     | 13 |
| Position Your Base                            | 14 |
| Your Headset                                  | 15 |
| Headset Controls                              | 15 |
| Talk Time                                     | 15 |
| Battery                                       | 16 |
| Muting Your Headset During a Call             | 16 |
| Adjusting Your Headset Volume                 | 16 |
| Out of Range Warning Tones                    | 16 |
| Your Base                                     | 17 |
| Base Phone Button and Switches                | 17 |
| Subscription Button                           | 17 |
| Wideband/Narrowband Switch                    | 18 |
| Auto Answer Switch                            | 18 |
| Daily Use                                     | 19 |
| Place an Outgoing Call                        | 19 |
| Answer an Incoming Call                       | 19 |
| Conference Up to Three Additional Headsets    | 19 |
| Troubleshooting                               | 20 |
| Headset                                       | 20 |
| Desk Phone                                    | 20 |

# Welcome

Congratulations on purchasing your new Plantronics product. This guide contains instructions for setting up and using your CS510/CS520 Wireless Headset System.

Please refer to the separate [safety instructions](#) for important product safety information prior to installation or use of the product.

# What's in the Box

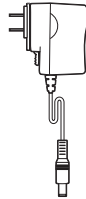


Base

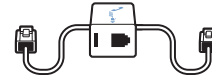


Headset

Model WH350 (binaural) shown -  
Model WH300 (monaural) available



Power supply

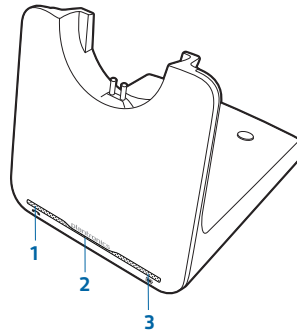


Telephone interface cable

# Base and Headset Basics

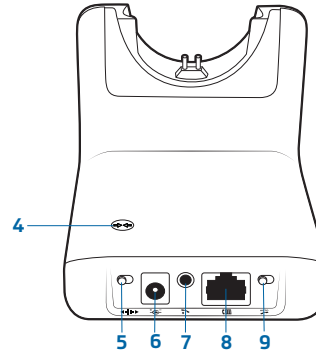
## Base overview

FRONT

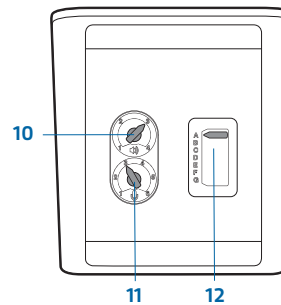


- 1 Call/mute LED
  - 2 Power on/subscription LED
  - 3 Charging LED
  - 4 Subscription button
  - 5 Narrowband/wideband switch
  - 6 Power jack
  - 7 Handset lifter/EHS cable jack
  - 8 Telephone interface cable jack
  - 9 Auto answer switch
  - 10 Listening volume dial\*
  - 11 Speaking volume dial\*
  - 12 Configuration switch\*
- \* For installation set up

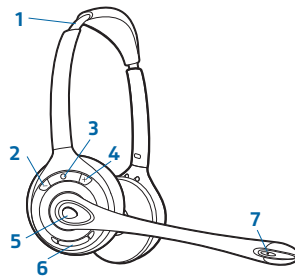
BACK



BOTTOM

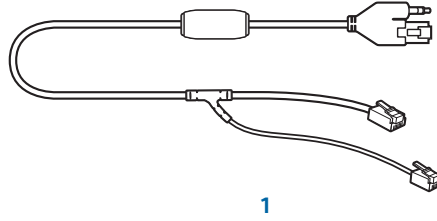


## Headset overview

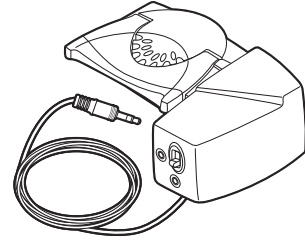


- 1 Headband
- 2 Volume down button
- 3 Headset LED
- 4 Volume up button
- 5 Call button
- 6 Mute button
- 7 Microphone

# Accessories



1



2

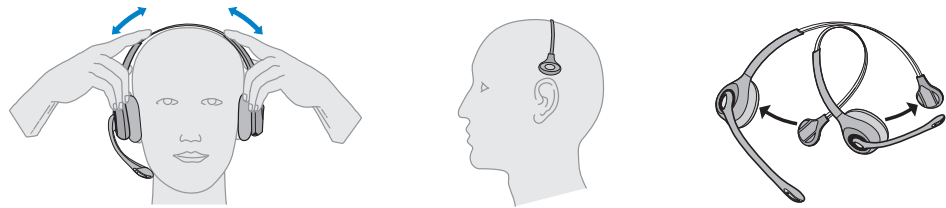
- 1 Electronic Hookswitch Cable (EHS)** Electronically takes your desk phone handset off hook. Enables remote call answer/end with your headset.
- 2 HL10™ Lifter** Automatically lifts handset and returns it to the cradle. Enables remote call answer/end with your headset

# Headset Set Up

Your headset comes fully assembled. You can adjust the headband for a better fit and the mouthpiece for optimal performance.

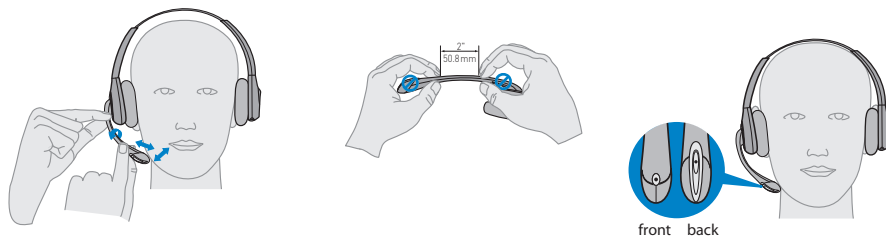
## Adjust the Headband

- 1 To adjust the headband, lengthen or shorten the band until it fits comfortably. The clickstop feature keeps the headband securely adjusted.
- 2 Position the headset so that the foam ear cushion(s) sit comfortably over the center of your ear(s). For the C510 headset, position the stabilizer T-bar above your ear.
- 3 For a tighter fit, gently pull the opposite end of the headset inward as shown.



## Adjust the Mouthpiece

- 1 Carefully bend and shape the boom with both hands as shown. Avoid bending or twisting the boom near the microphone or earpiece.
- 2 Position the click stop turret and boom so that the microphone is two finger-widths from the corner of your mouth.

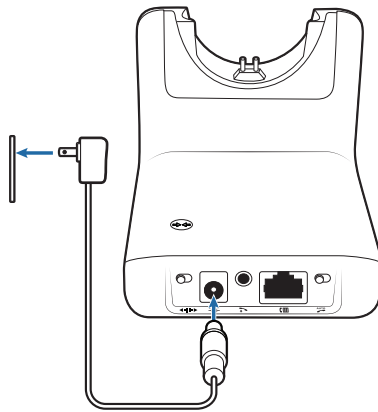


# Connect Your Desk Phone

This section describes how to connect the base to your desk phone.

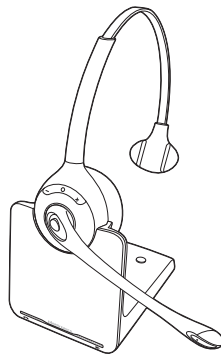
## Connect the Power

Plug one end of the power supply into the power jack on the back of the base and the other end into a working power outlet. The Power On LED will be solid white.



## Charge the Headset

Place the headset in the charge cradle. The charging LED on the base will flash green when charging and turn solid green when the headset is fully charged. Charge for at least 20 minutes prior to the first use. A full charge takes 3 hours.



**NOTE** The product has a replaceable battery. Contact Plantronics for replacement information.



## Connect and Configure Your Desk Phone

There are three setup options for connecting the CS510/CS520 to your desk phone. Select one of the following and continue.

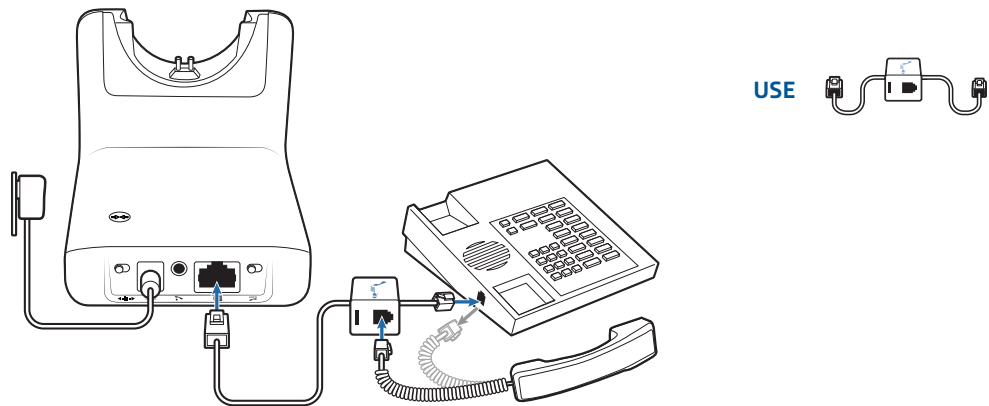
- Desk phone (standard)
- Desk phone + HL10 lifter (sold separately)
- Desk phone + EHS cable (sold separately)

**NOTE** If you will be using a standard desk phone set up or a desk phone with an HL10 lifter, continue below. If you will be using the desk phone with an EHS cable, refer to [Desk phone plus EHS cable](#) section in this guide. For further installation information refer to the [EHS Getting Started guide](#) that came with your EHS cable or at [plantronics.com/accessories](http://plantronics.com/accessories).

### Desk Phone (standard)

- 1 Connect one end of the telephone interface cable to the back of the base.
- 2 Disconnect the handset coil cord from the desk phone and re-connect it to the telephone interface cable junction box.
- 3 Connect the remaining end of the telephone interface cable into the open handset port on the desk phone.

**NOTE** Your desk phone handset will continue to work; it's just hooked up differently.



**NOTE** If your phone has a built-in headset port, you should only use the headset port if you will not be using the HL10 lifter. In this configuration, you must press both the headset button on your phone and the call control button on the headset to answer or end calls.

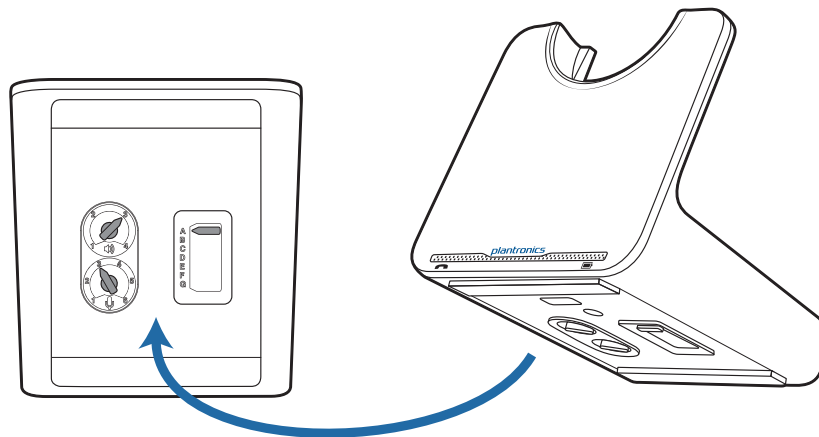
## Check Configuration and Make a Test Call

- 1 If your desk phone has a volume control set it to mid-range.
- 2 Look at the bottom panel of your base and make sure the default settings are correct. Set your desk phone's volume also.

listening volume dial (🔊) = 3 and speaking volume dial (🎤) = 3

configuration switch = A

desk phone volume = mid-range



- 3 Remove the handset from desk phone cradle.
- 4 While wearing your headset, press the call button on the headset.
- 5 If you do not hear a dial tone, adjust the configuration switch (A-G) until you do.

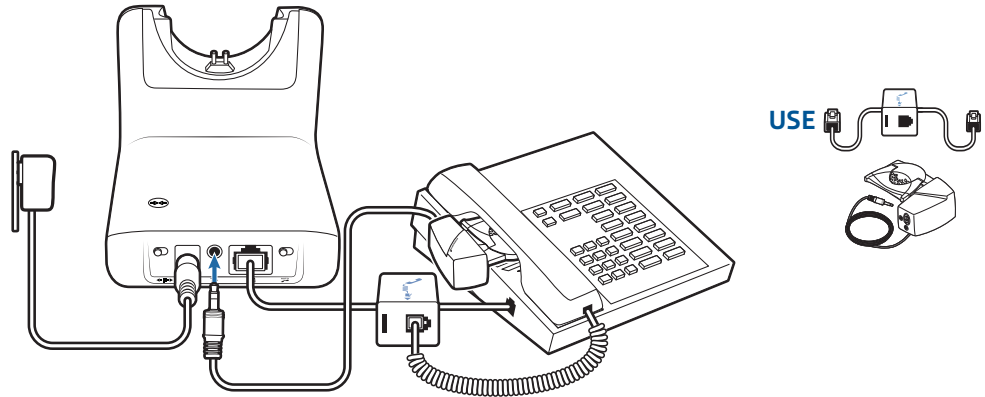
**NOTE** For most phones, these factory default settings will sound the best.

- 6 Dial a test call from the desk phone. If needed, fine tune the volume with the headset volume controls. You can also adjust the desk phone speaking and listening volumes on the bottom of the base.

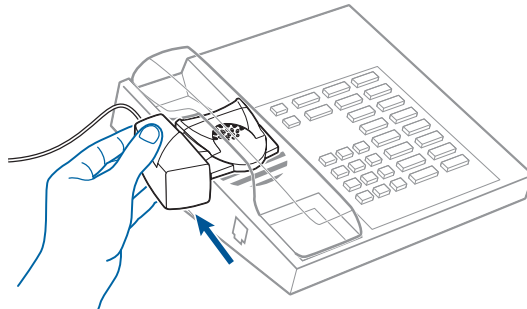
## Desk Phone plus HL10 Lifter (sold separately)

**NOTE** First follow the steps above for [Desk Phone \(Standard\)](#).

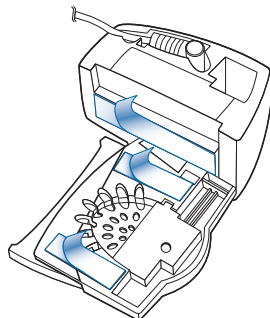
- 1 Firmly press the handset lifter power cord into the handset lifter jack.



- 2 While wearing your headset, slide the handset lifter arm under the handset until the lifter base touches the side of the phone.

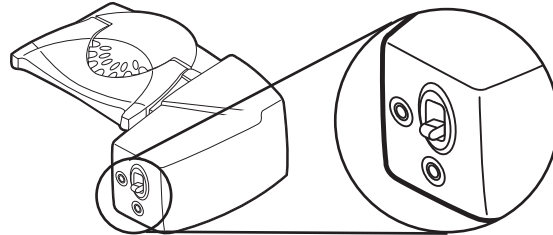


- 3 Slide the lifter up to where it nearly touches the handset earpiece.
- 4 Press the call control button on your headset to activate the lifter.
- 5 If you hear a dial tone the lifter is set correctly and needs no adjustment.
- 6 Remove the protective strips from the 3 mounting tapes on the underside of the lifter.
- 7 Gently place the lifter on the desk phone in the pre-determined position.
- 8 Press firmly to adhere.



### If You Do Not Hear a Dial Tone

- 1 If you do not hear a dial tone, raise the lifter height switch to the next highest position.



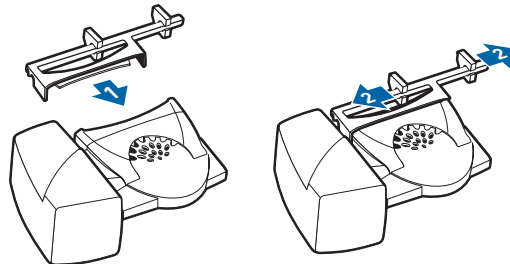
- 2 Repeat steps 2 through 5 above as necessary until you hear a dial tone.
- 3 When you hear a dial tone, secure the lifter as described in steps 6 through 8.

### Additional Parts (if required)

Use extender arm when the handset lifter needs additional stability lifting and returning handset to cradle.

#### Extender Arm

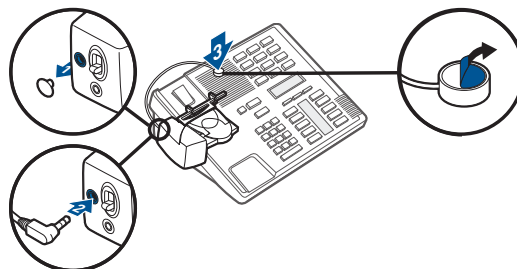
- 1 Slide extender arm onto lifter.
- 2 Stabilizers can be shifted left and right. Position stabilizers on outsides of handset to gently grip the phone.



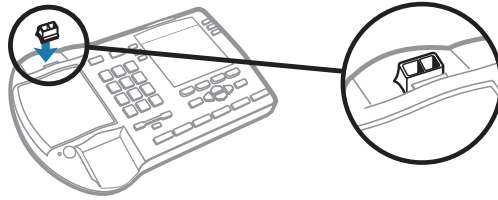
#### Ringer Microphone

Use ringer microphone only when the telephone speaker is not located directly under the handset.

- 1 Remove cover from ringer microphone jack on back of lifter.
- 2 Connect ringer microphone plug.
- 3 Place ringer microphone over phone speaker. Remove adhesive tape and attach.



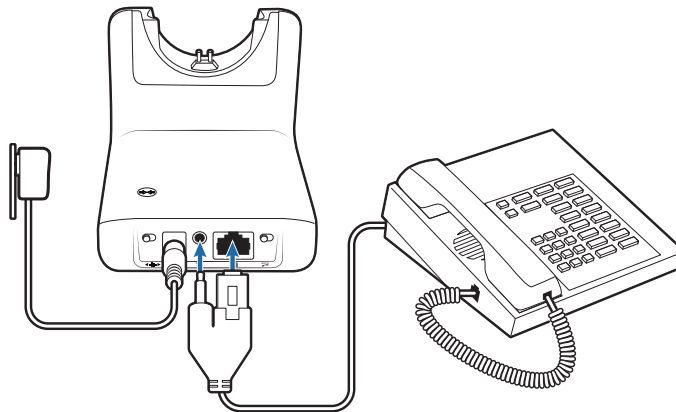
### For Nortel Phones Only



### Desk Phone plus EHS Cable

- 1 Connect the end of the EHS cable to the base and the other end to the desk phone as described in the EHS Adapter Getting Started guide.

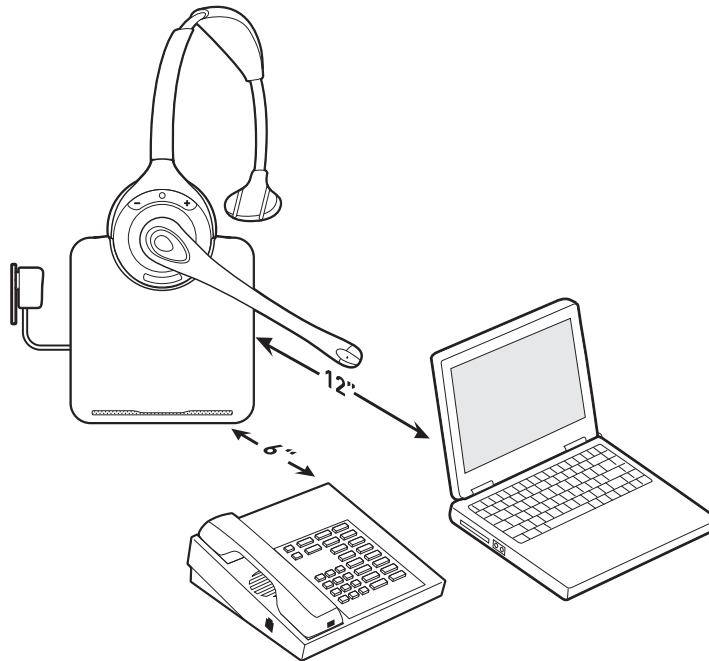
**NOTE** For further installation information refer to the [EHS Getting Started guide](#) that came with your EHS cable or at [plantronics.com/accessories](http://plantronics.com/accessories).



## Position Your Base

The minimum recommended separation between your desk phone and the base is 6 inches.

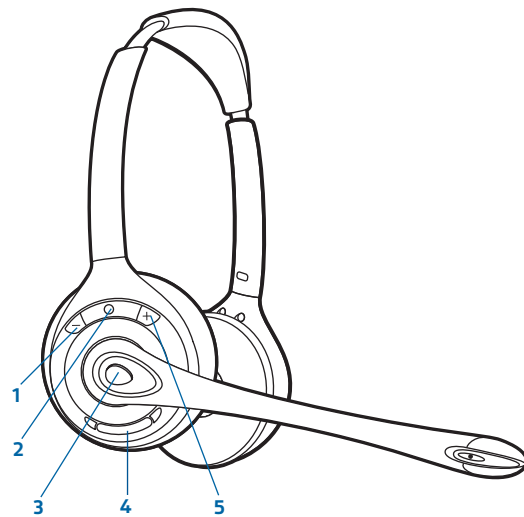
The minimum recommended separation between the base and computer is 12 inches. Incorrect position can cause noise and interference problems.



# Your Headset

Now that you've adjusted your headset and connected your desk phone, read this section to learn about the headset features, how to use the controls and more.

## Headset Controls



|   |                               |
|---|-------------------------------|
| <b>1 Volume [-] button</b>                        | Press to lower volume         |
| <b>2 Headset LED</b>                              | Flashes green when in use     |
| <b>3 Call button</b><br>Place, answer, end a call | Briefly press the call button |
| <b>4 Mute button</b>                              | Press to mute/unmute          |
| <b>5 Volume [+] button</b>                        | Press to increase volume      |



**IMPORTANT** For your safety, do not use headset at high volumes for extended periods of time. Doing so can cause hearing loss. Always listen at moderate levels. For more information on headsets and hearing visit: [plantronics.com/healthandsafety](http://plantronics.com/healthandsafety).

## Talk Time

With a single full charge, the CS510/CS520 will provide up to 8 hours of talk time. Talk time will be reduced when operating in wideband mode or if the headset is used consistently at a far distance from the base.

## Battery

This product has a replaceable battery. To ensure replacement batteries meet Plantronics high quality standards and for optimal performance, only use replacement batteries provided by Plantronics.

### Low Battery Warning

If you are on a call and the headset battery is critically low, you will hear a repeated single low tone every 15 seconds indicating that the battery is low. You should recharge the headset immediately.

If you are not on a call and press the call button, you will hear three low tones if the battery is critically low. You should recharge the headset immediately.

## Muting Your Headset During a Call

To mute/unmute the call, press the mute button.

When mute is activated, the Call/mute LED on the base will be solid red and you will hear three high tones (you will still be able to hear the caller).

## Adjusting Your Headset Volume

Fine-tune your headset volume by pressing the volume [+] button to increase or the volume [-] button to decrease.

Make set up volume adjustments for the desk phone with the base volume dials.

## Out of Range Warning Tones

If you are on a call and go out of the operating range, you will hear three low tones. You will hear a single mid tone when you are back in range.

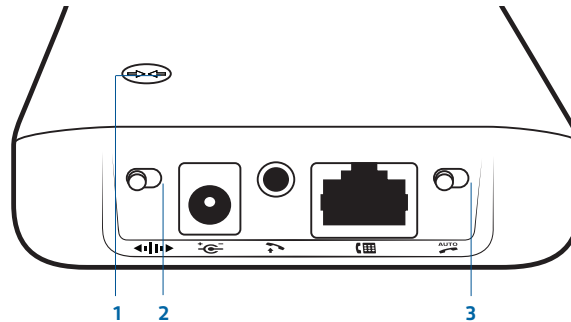
If you stay out of range, an active call will be suspended. The call will be re-established when you walk back into range. If you remain out of range for more than 5 minutes, the system will drop the call.

If you are not on a call and go out of the operating range and then press the call button, you will hear a single tone for the button press and three low tones for the failure to make a link.



# Your Base

## Base Phone Button and Switches



### 1 Subscription Button

The headset and base that came in the box are subscribed (connected) to each other. However, if you wish to use a new headset or need to restore subscription to your current headset, the units can be subscribed to each other by the following two methods.

#### Automatic Secure Subscription

With your system idle, docking a headset will automatically subscribe it to the base, making it the primary headset. The Power On/Subscription LED will flash white during subscription process and become solid white when the new subscription is established.

#### Manual Over-the-Air Subscription

- 1 With your system idle and your headset undocked, press and hold the subscription button on the base for three seconds. The Power on/subscription light will flash white.
- 2 Press and hold the volume up button on the headset for three seconds until the headset LED turns solid white. When the Power on/subscription LED on the base becomes solid white, the headset and base are subscribed to one another.

**NOTE** If the subscription process times out after two minutes or if the subscription process fails, the subscription LED on the base will go dark for three seconds and then re-illuminate steadily to indicate power is applied to the base. If this occurs, try to re-subscribe the headset again.

#### Ending Subscription

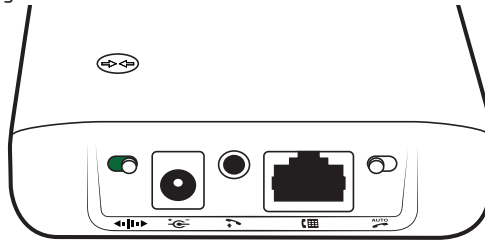
If the base is in subscription mode and you want to stop the base from searching for a headset, press the subscription button again. The subscription LED on the base will go dark for three seconds and then re-illuminate steadily to indicate power is applied to the base.

#### Power On/Subscription LED

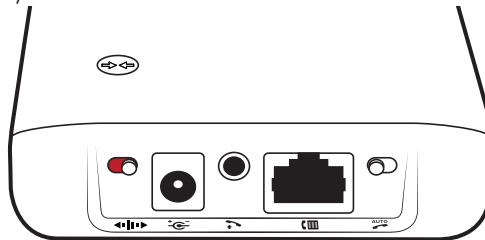
| Base Status                                | Power On/Subscription LED |
|--|---------------------------|
| Primary headset subscription               | Flashes white             |
| Primary headset subscribed to base         | Solid white               |
| Conference call headset subscription       | Flashes white             |
| Active conference call with guest headsets | Flashes white             |

## 2 Wideband/Narrowband Switch

The CS510/CS520 has wideband audio, which allows speech to sound clearer and more natural. If your desk phone is capable of wideband audio, set the Wideband-Narrowband switch to green for wideband.

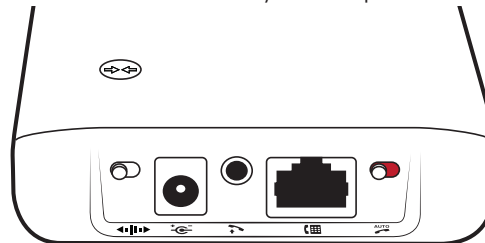


Set the switch to red (narrowband) for longer headset battery life or to increase the number of systems that can work in a small area.

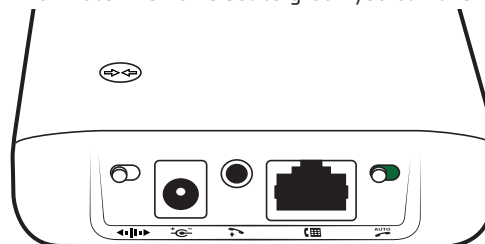


## 3 Auto Answer Switch

Auto answer saves a button press to establish the radio link between headset and base. When auto answer is set to red you must press the headset call button to answer an incoming call.



When Auto Answer is set to green you can answer a call just by lifting headset from the base.



**NOTE** Auto answer/end capability requires the use of an EHS cable or HL10 lifter. Visit [plantronics.com/accessories](http://plantronics.com/accessories) for more information.

# Daily Use

## Place an Outgoing Call

- 1 Wearing your headset, press the headset call button.
- 2 Remove the handset from the cradle. You will hear a dial tone.  
**NOTE** This step will be automatic if you install a lifter or EHS cable accessory. For a complete list of accessories, visit [plantronics.com/accessories](http://plantronics.com/accessories).
- 3 Dial the number using your desk phone.
- 4 To end the call, press the headset call button and hang up the handset.

## Answer an Incoming Call

- 1 Wearing your headset, press the headset call button.
- 2 Remove the handset from the cradle speak to your caller.  
**NOTE** This step will be automatic if you install a lifter or EHS cable accessory. For a complete list of accessories, visit [plantronics.com/accessories](http://plantronics.com/accessories).
- 3 To end the call, press the headset call button and hang up the handset.

## Conference Up to Three Additional Headsets

You can conference up to three additional headsets to a call in progress.

### Join a Conference Call

While the base has an active link (on a call), place the guest headset into primary user's charge cradle (this connects the headset to the base). When the base subscription LED stops flashing white and becomes solid white, the primary headset/user will hear a tone indicating a guest wishes to join the call. Press the primary user's call button to accept the guest headset within ten seconds or the request is terminated and the guest will hear an error tone in their headset.

To connect a guest headset that is of different variety than the primary headset briefly press the base subscription button while the base has an active link. Next, press the guest headset volume up button until the indicator light turns on. When the base subscription LED stops flashing white and remains solid white, the request to join will be heard in the primary user's headset and the primary user will have to press their call button within 10 seconds to accept the guest

### Exit a Conference Call

Guests headsets can remain as guests through multiple calls. To remove a guest headset, press the guest headset's call button or dock the primary user's headset in the charge cradle. A single tone in the master headset will be heard as each guest leaves the call.

# Troubleshooting

## Headset

Talk time performance is significantly degraded even after a full recharge.

Battery is wearing out. Call Plantronics at (800) 544-4660 for factory replacement information or contact us at [plantronics.com/support](http://plantronics.com/support).

## Desk Phone

I can't hear a dial tone in the headset.

Make sure your headset is charged.  
Make sure your headset is subscribed to base. See [Subscription button](#).  
Press the call button on your headset.  
If using a lifter, make sure the lifter is lifting the handset high enough to operate the hookswitch; set to a higher setting if necessary.  
Adjust the configuration switch on the base until a dial tone is heard.  
Fine tune the listening volume on the headset.  
If the volume is still too low, adjust the Listening volume dial on the base.

I hear static.

Make sure there is at least 12 inches between your base and your computer, and 6 inches between your base and your telephone. You may hear static as your headset is going out of range; move closer to the base.

The sound is distorted.

Lower the Speaking volume dial or Listening volume dial on the base. For most telephones the correct setting is position 3.  
If your desk phone has a volume control, lower until the distortion disappears.  
If the distortion is still present, adjust the headset volume control to lower the headset speaker volume. If the distortion persists, lower the Listening volume dial on the base.  
Make sure there is at least 12 inches between your base and your computer, and at least 6 inches between your base and your telephone.

I hear echo in the headset.

Lower the Listening volume dial and Speaking volume dial on the base. For most telephones, the correct setting is position 3.  
If the audio level is too low in this position, adjust the headset volume control to increase the headset speaker volume.  
If your speaking volume is too low for your listener in this position, adjust the position of the headset to make sure the microphone is a finger's width from the corner of your mouth.  
Adjust the Configuration switch. The most commonly used position is "A".

People I talk to can hear a buzz in the background.

Move the base further away from your phone.  
If the base power supply is plugged into a power strip, plug it into the wall directly.

The handset lifter is installed but does not lift the handset.

Be sure the handset lifter power cord is firmly pushed into the handset lifter jack on the base.



#### **Congratulations!**

The product you have just purchased carries the TCO Certified Headsets 2 label. This means that your headset is designed and manufactured according to some of the strictest performance and environmental criteria in the world. The manufacturer of this headset has selected it to be certified to TCO Certified Headsets 2 as a sign of usability, high performance and reduced impact on the natural environment.

Products certified to TCO Certified Headsets 2 are specifically designed for limiting the risk for hearing impairment. The headsets have acoustic limit protection to protect the user from sudden "sound-spikes" caused by interference on the telephone lines.

Other features of TCO Certified Headsets 2:

#### **Ergonomics**

- Volume control, individual adjustment and adaptation, replaceable parts and quality durability.

#### **Energy**

- Low energy consumption on the charging station.

#### **Emissions**

- Low SAR value. Low electromagnetic fields surrounding the charger.

#### **Ecology**

- Product is designed for recycling. Manufacturer must have a certified environmental management system such as EMAS or ISO 14 001
- Restrictions on
  - o Chlorinated and brominated flame retardants and polymers
  - o Hazardous heavy metals such as cadmium, mercury, hexavalent chromium and lead.

All TCO labelled products are verified and certified by TCO Development, an independent third party labelling organization. For over 20 years, TCO Development has been at the forefront of moving the design of IT equipment in a more user-friendly direction. Our criteria are developed in collaboration with an international group of researchers, experts, users and manufacturers. Since the program's inception, TCO labelled products have grown in popularity and are now requested by users and IT-manufacturers all over the world.

Full specifications and lists of certified products can be found on our homepage – [www.tcodevelopment.com](http://www.tcodevelopment.com)



Avoid touching the contacts at the rear of the unit unnecessarily. If operation is interrupted by a static event, power-cycle the product to restore normal functions.

## **NEED MORE HELP?**

[plantronics.com/support](http://plantronics.com/support)

#### **Plantronics, Inc.**

345 Encinal Street  
Santa Cruz, CA 95060  
United States

#### **Plantronics BV**

South Point Building C  
Scorpius 140  
2132 LR Hoofddorp  
Netherlands

© 2011 Plantronics, Inc. All rights reserved. Plantronics, the logo design, CS510, CS520, and HL10 are trademarks or registered trademarks of Plantronics, Inc. All other trademarks are the property of their respective owners.

Patents US 5,210,791; 6,735,453; 7,633,963; D505,413; D535,285; D538,785; EM 000543798-0004, 000543798-0005; China ZL200630123313.2; ZL200630123314.7; Taiwan D117333; D117515; Patents Pending

85047-06 (07.11)