

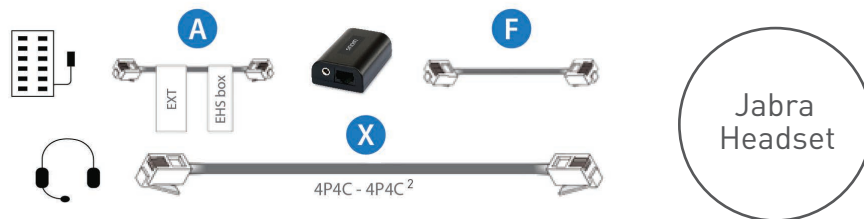
# EHS Wireless Headset Adapter

Headsets allow users a much wider range of movement than what's possible with a telephone receiver. The SNOM EHS Wireless Headset Adapter is compatible with the majority of Snom Series desk phones and creates a bridge between professional VoIP telephony and professional wireless headsets supplied by Jabra®, Plantronics® and Sennheiser®. Using an electronic hook switch that conforms to vendor-specific norms, as well as to the DMSG standard, this adapter makes it possible to accept calls on the headset itself. When the phone receives an incoming call, the original ringing tone is signaled in the headset, and the call can be answered and terminated on the headset.

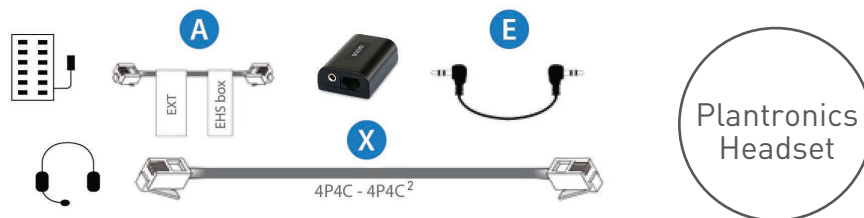


## Snom EHS Key Features

- Compatible with D715, D717, D725, D735, D745, D765, D785
- Call acceptance and termination on headset
- Vendor-specific EHS protocols
- DMSG standard
- Signaling of ringtone
- Plug and play
- Headsets supported: Jabra, Plantronics and Sennheiser<sup>1</sup>

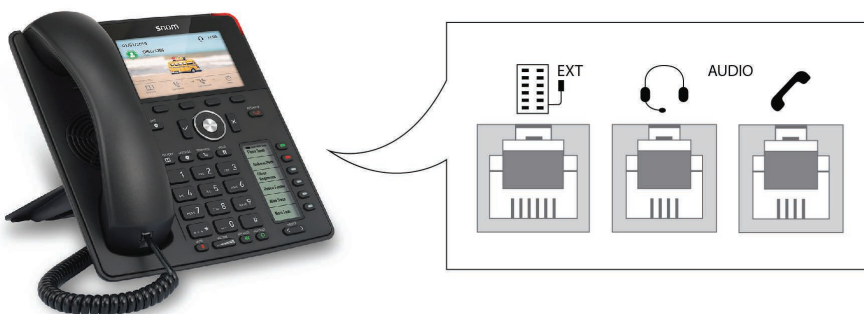


- A** RJ12 to RJ12
- E** 3.5mm to 3.5mm
- F** RJ45 to RJ45
- X** RJ9 to RJ9



### Specifications, Weights and Dimensions

- Color: Black
- APN: 89-S015-00
- Product dimensions (WxDxH): 2.34" x 1.52" x 0.77"
- Product weight: 0.20 lbs
- Giftbox dimensions (WxDxH): 4.92" x 3.74" x 1.38"
- Giftbox weight: 0.22 lbs
- Master pack dimensions (WxDxH): 16.93" x 12.60" x 13.78"
- Master pack weight: 22.66 lbs
- Quantity: 100



<sup>1</sup>Sennheiser DW Pro1 Wireless Headset does not require Snom-EHS. It only requires the Sennheiser CEHS-SN01 accessory cable.

<sup>2</sup>Not included with Snom-EHS. Provided by headset product.